

Córdoba, 27 de abril de 2023

Índices de Ventas de Inmuebles en Córdoba

Cámara Empresarial de Desarrollistas Urbanos de Córdoba (CEDUC)
 Elaborado por Economic Trends S.A. para la CEDUC
 Datos al 31 de marzo de 2023

Síntesis de principales resultados

Tipología	Octubre 2011 = 100		% de variación Series desestacionalizadas	
	Mar-22	Mar-23	Interanual	Últimos 3 meses vs 3 meses previos
Ventas No Financiadas				
Departamentos y casas	18.5	78.3	322.5	179.3
Cocheras	0.6	4.7	700.1	145.5
Lotes	84.6	74.8	-11.6	22.1
Índice de ventas no financiadas	36.3	70.9	95.1	83.6
Ventas Financiadas				
Departamentos y casas	10.3	13.8	34.0	-46.9
Cocheras	0.0	0.0	0.0	-98.4
Lotes	40.1	36.5	-9.0	-50.4
Índice de ventas financiadas	12.2	15.1	23.2	-47.7
Ventas Totales				
Departamentos y casas	12.1	28.1	132.0	4.8
Cocheras	0.3	2.4	700.1	130.8
Lotes	67.3	59.9	-11.0	-7.9
Índice de ventas totales	19.2	31.3	62.7	0.2

Ventas de inmuebles durante marzo de 2023, en comparación con marzo de 2022:

1.- Las **ventas no financiadas** (departamentos y casas, cocheras y lotes) durante el mes de **marzo de 2023** fueron **95.1% superiores** a las registradas en marzo de 2022, con mayores ventas no financiadas de departamentos y casas (322.5%) y de cocheras (700.1%), pero menores ventas no financiadas de lotes (-11.6%).

2.- Las **ventas financiadas** (departamentos y casas, cocheras y lotes) durante el mes de **marzo de 2023** fueron **23.2% superiores** a las registradas en marzo de 2022, con mayores ventas financiadas de departamentos y casas (34.0%), sin diferencias en el caso de las cocheras, y menores ventas de lotes (-9.0%).

3.- El **total de ventas financiadas y no financiadas** durante **marzo de 2023** fue **62.7% superior** al nivel registrado en marzo de 2022, con mayores ventas totales (financiadas y no financiadas) de departamentos y casas (132.0%) y de cocheras (700.1%), pero menores ventas totales de lotes (-11.0%).

Ventas de inmuebles durante los últimos 3 meses en comparación con 3 meses previos (series desestacionalizadas):

4.- Las **ventas no financiadas** (departamentos y casas, cocheras y lotes) durante los **últimos 3 meses** fueron **83.6% superiores** a las registradas durante los 3 meses previos, con mayores ventas no financiadas de departamentos y casas (179.3%), de cocheras (145.5%) y de lotes (22.1%).

5.- Las **ventas financiadas** (departamentos y casas, cocheras y lotes) durante los **últimos 3 meses** fueron **47.7% inferiores** a las registradas durante los 3 meses previos, con menores ventas financiadas de departamentos y casas (-46.9%), de cocheras (-98.4%) y de lotes (-50.4%).

6.- El **total de ventas financiadas y no financiadas** durante los **últimos 3 meses** fue **0.2% superior** al nivel registrado durante los 3 meses previos, con mayores ventas totales (financiadas y no financiadas) de departamentos y casas (4.8%), de cocheras (130.8%), pero menores ventas totales de lotes (-7.9%).

Para analizar más en detalle la evolución de cada uno de los índices, e interpretar mejor las tendencias en curso, es conveniente analizar el material incluido en la sección de gráficos.



Índices de Ventas de Inmuebles en Córdoba

Series originales (con estacionalidad) - Octubre de 2011 = 100

Mes	Series Originales (con estacionalidad)											
	No Financiado				Financiado				No Financiado + Financiado			
	Deptos y casas	Cocheras	Lotes	Índice No Financiado	Deptos y casas	Cocheras	Lotes	Índice No Financiado	Deptos y casas	Cocheras	Lotes	Índice No Financiado
May-10	168.21	-	-	-	58.84	-	-	-	84.32	-	77.13	79.23
Jun-10	148.87	-	-	-	75.91	-	-	-	94.13	61.11	122.59	96.50
Jul-10	128.06	-	-	-	89.70	-	-	-	100.54	96.76	90.61	98.97
Aug-10	161.19	-	-	-	84.46	-	-	-	103.72	157.87	77.40	102.67
Sep-10	141.82	-	-	-	84.06	-	-	-	99.10	95.23	85.28	96.98
Oct-10	146.81	-	-	-	67.75	-	-	-	87.50	92.96	108.54	90.70
Nov-10	174.46	-	-	-	88.04	-	-	-	109.87	77.09	47.93	99.64
Dec-10	205.13	-	-	-	94.76	-	-	-	122.53	151.84	134.50	125.62
Jan-11	121.05	-	-	-	56.53	-	-	-	72.76	86.43	75.75	73.84
Feb-11	129.98	-	-	-	50.33	-	-	-	70.18	137.40	77.98	74.53
Mar-11	113.57	-	-	-	61.32	-	-	-	75.08	73.13	119.82	81.23
Apr-11	107.32	-	-	-	63.23	-	-	-	75.14	48.76	88.13	75.67
May-11	113.49	-	-	-	86.22	-	-	-	94.12	97.51	89.38	93.62
Jun-11	99.86	-	-	-	51.55	-	-	-	64.39	101.94	83.13	68.83
Jul-11	115.34	-	-	-	61.04	-	-	-	75.48	86.43	83.75	77.16
Aug-11	104.94	-	-	-	66.92	-	-	-	76.55	86.43	69.38	76.03
Sep-11	155.62	-	-	-	96.81	-	-	-	111.84	74.51	98.13	108.11
Oct-11	100.00	100.00	100.00	100.00	100.00	100.00	100.00	100.00	100.00	100.00	100.00	100.00
Nov-11	96.70	89.74	122.22	103.58	93.14	80.56	198.41	100.79	93.94	85.33	151.85	101.60
Dec-11	97.53	60.64	237.37	135.32	75.39	88.89	38.10	72.98	80.31	74.20	159.88	91.12
Jan-12	58.77	65.49	102.02	72.03	46.84	127.78	266.67	66.33	49.50	95.39	166.05	67.99
Feb-12	71.90	87.32	86.87	77.62	56.23	127.78	223.81	71.41	59.72	106.74	140.12	73.22
Mar-12	101.87	82.72	121.21	105.88	61.89	61.11	312.70	81.07	70.78	72.35	195.68	88.29
Apr-12	65.38	68.94	84.85	71.39	89.09	94.44	193.65	97.28	83.82	81.18	127.16	89.74
May-12	90.74	66.64	130.30	100.25	86.97	105.56	165.08	93.56	87.81	85.32	143.83	95.51
Jun-12	97.38	48.25	66.67	84.12	61.13	113.89	84.13	64.62	69.19	79.76	73.46	70.30
Jul-12	87.93	59.74	88.89	85.77	110.16	175.00	123.81	113.33	105.22	115.07	102.47	105.31
Aug-12	104.70	96.51	91.92	100.25	79.23	177.78	120.63	85.64	84.90	135.52	103.09	89.89
Sep-12	78.20	96.51	83.84	81.44	89.75	250.00	115.87	97.01	87.18	170.18	96.30	92.48
Oct-12	102.99	128.68	82.83	99.30	91.71	213.89	74.60	94.41	94.22	169.58	79.63	95.83
Nov-12	86.84	52.85	139.39	99.30	104.72	186.11	49.21	103.14	100.75	116.82	104.32	102.03
Dec-12	71.62	85.57	79.80	75.22	90.55	155.56	93.65	92.92	86.34	119.16	85.19	87.77
Jan-13	62.41	42.78	62.63	60.77	86.99	238.89	100	92.97	81.53	136.91	77.16	83.60
Feb-13	69.29	37.75	72.73	67.57	70.20	175.00	84.13	74.70	70.00	103.63	77.16	72.63
Mar-13	78.86	60.40	84.85	79.01	53.55	161.11	280.95	74.49	59.17	108.74	161.11	75.80
Apr-13	64.75	42.78	63.64	62.52	53.59	161.11	106.35	61.15	56.07	99.58	80.25	61.55
May-13	92.16	103.18	147.47	109.32	64.50	100.00	253.97	80.17	70.65	101.66	188.89	88.65
Jun-13	75.40	76.73	84.85	78.28	41.64	100.00	285.71	62.24	49.15	87.90	162.96	66.91
Jul-13	67.43	89.96	108.08	81.29	56.67	283.33	398.41	90.27	59.06	182.78	220.99	87.66
Aug-13	63.71	277.80	145.45	106.21	47.06	80.56	487.30	81.86	50.76	183.12	278.40	88.95
Sep-13	55.45	113.77	154.55	89.54	63.12	66.67	346.03	84.90	61.41	91.16	229.01	86.25
Oct-13	72.43	89.96	234.34	121.40	55.09	336.11	200.00	75.40	58.94	208.11	220.99	88.79
Nov-13	72.62	134.93	103.03	86.93	61.80	108.33	265.08	78.89	64.21	122.17	166.05	81.23
Dec-13	90.49	89.96	115.15	97.67	33.14	66.67	77.78	37.66	45.89	78.78	100.62	55.13
Jan-14	53.37	44.98	111.11	69.56	39.77	72.22	214.29	54.20	42.80	58.06	151.23	58.67
Feb-14	54.73	153.45	84.85	72.11	36.71	55.56	111.11	43.03	40.72	106.46	95.06	51.49
Mar-14	43.35	48.46	62.63	49.44	29.43	27.78	250.79	46.32	32.53	38.53	135.80	47.23
Apr-14	39.30	80.76	66.67	50.91	23.51	19.44	252.38	40.90	27.02	51.33	138.89	43.81
May-14	56.52	91.53	102.08	72.91	33.73	38.89	303.17	54.53	38.80	66.26	180.29	59.88
Jun-14	42.25	91.53	169.79	83.89	25.21	41.67	380.95	52.99	29.00	67.60	251.91	61.98
Jul-14	41.62	48.46	111.46	62.68	32.45	55.56	376.19	59.53	34.49	51.87	214.41	60.44
Aug-14	39.30	29.61	122.92	62.97	27.52	47.22	211.11	42.23	30.14	38.07	157.21	48.26
Sep-14	64.06	83.46	458.61	181.37	21.30	16.67	325.40	44.43	30.81	51.40	406.81	84.28
Oct-14	62.14	45.77	115.69	76.42	23.24	36.11	226.98	39.26	31.89	41.13	158.97	50.08
Nov-14	43.36	40.38	104.32	60.97	5.35	33.33	71.43	11.33	13.81	37.00	91.53	25.78
Dec-14	50.06	35.00	104.32	64.66	11.62	30.56	130.16	21.32	20.17	32.87	114.37	33.93
Jan-15	70.97	26.25	55.29	62.50	11.44	38.89	52.38	15.47	24.68	32.32	54.16	29.16



Índices de Ventas de Inmuebles en Córdoba

Series originales (con estacionalidad) - Octubre de 2011 = 100

Mes	Series Originales (con estacionalidad)											
	No Financiado				Financiado				No Financiado + Financiado			
	Deptos y casas	Cocheras	Lotes	Índice No Financiado	Deptos y casas	Cocheras	Lotes	Índice No Financiado	Deptos y casas	Cocheras	Lotes	Índice No Financiado
Feb-15	54.31	87.50	71.98	62.36	27.16	16.67	71.43	30.20	33.20	53.50	71.77	39.56
Mar-15	56.10	183.19	74.07	72.37	39.27	25	31.75	38.22	43.01	107.26	57.61	48.16
Apr-15	35.19	51.95	189.87	81.98	20.00	30.56	42.86	22.10	23.38	41.68	132.70	39.52
May-15	44.75	60.15	257.68	108.49	26.65	25	58.73	29.05	30.68	43.28	180.31	52.17
Jun-15	81.15	155.85	302.54	152.50	27.32	11.11	61.90	29.44	39.29	86.38	208.96	65.25
Jul-15	43.30	49.22	181.52	84.32	30.73	27.78	76.19	34.11	33.52	38.93	140.56	48.73
Aug-15	42.77	139.45	167.96	87.83	41.92	30.56	100	46.00	42.11	87.18	141.53	58.17
Sep-15	63.74	106.63	239.95	119.10	30.58	13.89	57.14	32.07	37.95	62.12	168.86	57.40
Oct-15	62.42	62.89	212.82	106.54	31.02	11.11	44.44	31.40	38.00	38.03	147.34	53.27
Nov-15	42.21	46.48	234.73	99.00	28.82	13.89	30.16	28.43	31.79	30.84	155.17	48.97
Dec-15	39.32	355.45	134.58	94.61	30.73	191.67	22.22	35.36	32.64	276.83	90.88	52.60
Jan-16	19.71	24.61	89.72	40.65	31.02	11.11	25.40	29.94	28.51	18.13	64.70	33.06
Feb-16	38.29	53.69	125.19	65.09	26.59	8.33	31.75	26.38	29.19	31.92	88.85	37.65
Mar-16	51.35	53.69	183.61	90.31	23.50	13.89	46.03	24.91	29.69	34.59	130.11	43.95
Apr-16	26.93	44.74	135.62	60.33	29.34	11.11	44.44	29.89	28.80	28.60	100.16	38.75
May-16	32.78	29.08	135.62	62.60	29.00	19.44	36.51	29.26	29.84	24.46	97.08	38.96
Jun-16	38.52	44.74	109.54	59.87	25.12	11.11	20.63	24.32	28.10	28.60	74.97	34.67
Jul-16	43.13	55.93	119.97	66.76	13.39	5.56	92.06	19.15	20.00	31.75	109.12	33.01
Aug-16	57.19	55.93	136.66	80.37	7.12	22.22	68.25	12.30	18.25	39.75	110.06	32.11
Sep-16	45.37	34.42	137.71	71.49	16.95	13.89	25.40	17.50	23.27	24.56	94.03	33.21
Oct-16	39.40	92.50	116.84	66.70	16.11	5.56	79.37	20.61	21.29	50.76	102.27	34.02
Nov-16	59.22	68.83	157.53	88.86	14.14	8.33	46.03	16.39	24.16	39.79	114.17	37.48
Dec-16	77.49	90.96	157.53	102.11	17.26	2.78	33.33	18.02	30.65	48.63	109.23	42.49
Jan-17	37.99	20.21	141.88	66.90	24.62	11.11	57.14	26.67	27.59	15.84	108.93	38.38
Feb-17	46.45	12.99	109.54	62.04	29.91	11.11	44.44	30.41	33.59	12.09	84.23	39.62
Mar-17	25.83	18.77	141.88	59.23	11.07	13.89	82.54	16.64	14.35	16.43	118.80	29.03
Apr-17	29.28	33.21	106.41	52.23	6.50	0.00	112.70	14.42	11.57	17.27	108.86	25.42
May-17	29.16	27.43	128.32	58.07	19.60	19.44	92.06	25.14	21.73	23.60	114.22	34.73
Jun-17	39.01	20.21	118.93	60.81	14.63	38.89	34.15	16.92	20.05	29.18	85.96	29.70
Jul-17	38.97	28.88	140.20	67.77	17.42	41.67	136.61	27.34	22.21	35.02	138.80	39.11
Aug-17	65.64	30.08	147.44	86.53	20.95	44.44	154.43	31.94	30.89	36.97	150.16	47.83
Sep-17	35.18	51.74	103.12	56.52	19.05	27.78	112.85	26.52	22.64	40.24	106.90	35.25
Oct-17	30.00	17.25	117.59	54.56	23.76	72.22	32.67	26.04	25.15	43.63	84.56	34.34
Nov-17	37.73	20.69	116.68	59.39	25.54	61.11	50.49	28.62	28.25	40.09	90.94	37.57
Dec-17	41.86	14.95	101.31	56.95	16.91	61.11	23.76	18.88	22.45	37.11	71.15	29.96
Jan-18	50.89	25.29	124.69	70.30	24.44	16.67	102.46	30.15	30.32	21.15	116.04	41.84
Feb-18	32.68	22.99	103.26	52.52	13.71	27.78	84.64	19.60	17.92	25.29	96.02	29.18
Mar-18	46.40	12.65	120.79	65.28	22.02	38.89	92.06	27.93	27.44	25.24	109.62	38.80
Apr-18	38.86	18.27	175.34	77.07	18.06	55.56	106.91	26.09	22.69	36.17	148.73	40.93
May-18	58.31	80.09	168.37	92.45	18.75	102.78	102.46	27.92	27.55	90.98	142.73	46.70
Jun-18	33.18	17.65	100.62	51.60	15.49	8.33	56.43	18.39	19.42	13.18	83.43	28.05
Jul-18	28.21	19.01	114.73	52.77	21.98	30.56	98.00	28.08	23.36	24.55	108.22	35.26
Aug-18	63.97	43.44	131.65	82.03	11.26	19.44	63.85	15.56	22.98	31.92	105.29	34.90
Sep-18	58.46	16.29	80.87	61.38	11.66	16.67	50.49	14.79	22.06	16.47	69.06	28.35
Oct-18	19.50	8.15	36.67	23.55	11.98	141.67	74.24	21.00	13.65	72.24	51.29	21.74
Nov-18	28.05	20.36	112.12	52.03	9.29	125.00	41.58	15.56	13.46	70.59	84.69	26.17
Dec-18	38.72	6.79	64.97	43.65	7.63	29.76	47.52	11.41	14.54	17.82	58.18	20.79
Jan-19	18.77	12.22	70.21	33.28	16.77	71.43	34.56	19.93	17.22	40.64	56.34	23.81
Feb-19	21.78	2.72	96.25	41.96	18.16	47.62	45.36	21.21	18.96	24.27	76.46	27.24
Mar-19	21.46	2.22	70.21	34.08	15.62	101.19	38.88	20.21	16.92	49.73	58.02	24.25
Apr-19	26.32	1.97	97.12	44.96	4.48	5.95	43.20	7.49	9.33	3.88	76.15	18.39
May-19	25.41	0.74	118.18	50.46	7.32	53.57	49.68	12.08	11.34	26.10	91.54	23.25
Jun-19	20.03	2.47	58.51	29.79	11.57	11.90	47.19	14.31	13.45	7.00	54.11	18.81
Jul-19	28.86	2.19	76.61	40.55	22.69	23.81	39.74	24.03	24.06	12.57	62.27	28.84
Aug-19	39.06	1.10	149.05	68.01	21.43	0.00	52.16	23.08	25.35	0.57	111.37	36.16
Sep-19	26.33	0.73	43.65	29.19	21.91	47.62	55.23	25.31	22.89	23.24	48.15	26.44
Oct-19	35.90	1.10	46.84	36.10	12.74	62.27	27.61	15.50	17.89	30.46	39.37	21.49



Índices de Ventas de Inmuebles en Córdoba

Series originales (con estacionalidad) - Octubre de 2011 = 100

Mes	Series Originales (con estacionalidad)											
	No Financiado				Financiado				No Financiado + Financiado			
	Deptos y casas	Cocheras	Lotes	Índice No Financiado	Deptos y casas	Cocheras	Lotes	Índice No Financiado	Deptos y casas	Cocheras	Lotes	Índice No Financiado
Nov-19	14.55	2.56	32.14	18.67	26.03	26.86	33.75	26.65	23.48	14.22	32.76	24.33
Dec-19	29.30	4.39	29.96	27.34	12.87	7.52	39.89	14.76	16.52	5.89	33.82	18.42
Jan-20	9.85	2.19	34.71	16.47	12.71	15.04	79.77	17.92	12.07	8.36	52.24	17.50
Feb-20	13.91	1.10	29.84	17.47	27.97	22.56	67.50	30.82	24.85	11.40	44.49	26.94
Mar-20	11.52	2.19	31.11	16.45	10.66	1.07	42.19	12.76	10.85	1.66	35.42	13.84
Apr-20	8.89	8.15	34.92	16.45	6.49	3.22	21.09	7.50	7.02	5.78	29.54	10.11
May-20	23.64	18.49	96.51	44.55	8.06	2.15	67.50	12.41	11.52	10.65	85.23	21.77
Jun-20	33.28	20.69	101.59	52.21	13.30	7.52	164.54	24.68	17.74	14.37	126.07	32.70
Jul-20	27.09	10.34	142.22	59.38	22.58	2.15	371.26	48.60	23.58	6.41	231.29	51.74
Aug-20	24.83	6.14	107.30	47.38	10.48	3.22	286.88	31.40	13.67	4.74	177.14	36.05
Sep-20	21.99	3.41	59.68	31.43	17.55	1.07	265.79	36.01	18.54	2.29	139.83	34.68
Oct-20	26.84	3.81	53.97	32.80	20.69	10.74	478.42	55.40	22.06	7.14	219.03	48.82
Nov-20	17.53	3.21	26.03	18.78	41.24	8.60	345.52	63.47	35.97	5.80	150.28	50.46
Dec-20	18.36	4.82	15.24	16.27	16.23	4.30	199.34	29.86	16.71	4.57	86.83	25.91
Jan-21	12.85	2.28	29.84	16.92	17.36	4.30	363.24	43.41	16.36	3.25	159.50	35.70
Feb-21	8.50	1.77	30.48	14.36	12.56	2.87	230.35	28.91	11.66	2.30	108.20	24.68
Mar-21	30.22	9.89	36.19	30.21	19.77	2.87	265.79	38.05	22.10	6.52	125.48	35.77
Apr-21	27.45	3.04	28.57	25.66	20.18	5.73	270.22	38.85	21.80	4.33	122.54	35.01
May-21	66.93	6.08	34.92	52.28	25.31	7.16	70.88	28.20	34.57	6.60	48.90	35.21
Jun-21	43.39	3.04	24.13	34.25	24.32	7.16	75.31	27.66	28.56	5.02	44.03	29.58
Jul-21	32.25	2.54	38.10	31.39	34.06	1.43	53.16	34.45	33.66	2.01	43.95	33.56
Aug-21	27.37	3.46	53.46	32.95	26.49	0.00	163.90	36.14	26.69	1.80	96.41	35.21
Sep-21	24.57	1.84	41.17	27.46	22.24	7.16	110.74	28.52	22.76	4.40	68.23	28.21
Oct-21	21.17	1.84	49.40	27.77	14.76	1.43	65.14	18.18	16.18	1.65	55.52	20.97
Nov-21	28.48	6.91	43.64	31.05	11.99	5.73	65.14	15.85	15.65	6.35	52.00	20.28
Dec-21	38.11	8.89	33.80	34.32	27.22	10.03	56.65	28.91	29.65	9.44	42.69	30.49
Jan-22	13.45	2.22	43.02	21.14	24.70	5.73	104.80	30.21	22.20	3.91	67.05	27.57
Feb-22	13.21	0.24	47.73	22.20	13.64	0.20	67.65	17.33	13.54	0.22	55.47	18.75
Mar-22	18.52	0.58	84.57	36.33	10.29	0.00	40.09	12.24	12.12	0.30	67.27	19.25
Apr-22	11.73	1.02	66.15	26.75	10.52	1.02	170.10	22.43	10.79	1.02	106.57	23.68
May-22	14.27	0.82	43.54	21.69	9.98	1.43	126.67	18.63	10.93	1.12	75.87	19.52
Jun-22	20.59	1.03	66.98	32.49	10.30	0.20	100.22	16.85	12.58	0.63	79.91	21.40
Jul-22	24.31	0.53	156.58	61.02	17.02	1.02	253.34	34.59	18.64	0.77	194.21	42.28
Aug-22	20.62	1.21	86.24	38.17	7.42	0.00	107.74	14.85	10.35	0.63	94.60	21.64
Sep-22	21.17	1.84	49.40	27.77	14.76	1.43	65.14	18.18	16.18	1.65	55.52	20.97
Oct-22	17.04	0.68	25.45	18.09	5.62	0.41	22.55	6.75	8.16	0.55	24.32	10.05
Nov-22	22.59	2.11	74.10	35.92	39.90	0.00	108.57	43.85	36.05	1.10	87.51	41.54
Dec-22	20.89	1.52	66.22	32.49	13.52	0.00	26.06	14.04	15.16	0.79	50.60	19.41
Jan-23	17.84	1.24	55.71	27.50	8.84	0.00	26.06	9.87	10.84	0.65	44.18	15.00
Feb-23	40.33	1.24	53.06	40.68	5.83	0.00	26.06	7.19	13.50	0.65	42.56	16.94
Mar-23	78.26	4.66	74.76	70.86	13.79	0.00	36.48	15.07	28.12	2.42	59.87	31.31
% a/a	322.5	700.1	-11.6	95.1	34.0	0.0	-9.0	23.2	132.0	700.1	-11.0	62.7



Índices de Ventas de Inmuebles en Córdoba Series desestacionalizadas - Octubre de 2011 = 100

Mes	Series Desestacionalizadas											
	No Financiado				Financiado				No Financiado + Financiado			
	Deptos y casas	Cocheras	Lotes	Índice No Financiado	Deptos y casas	Cocheras	Lotes	Índice No Financiado	Deptos y casas	Cocheras	Lotes	Índice No Financiado
Oct-11	100.00	100.00	100.00	100.00	100.00	100.00	100.00	100.00	100.00	100.00	100.00	100.00
Nov-11	104.40	75.93	124.03	107.51	84.93	100.90	263.58	99.62	89.20	84.53	178.30	101.95
Dec-11	86.09	35.65	310.87	148.74	82.06	90.78	59.74	80.46	82.94	54.62	213.20	100.64
Jan-12	80.92	95.49	136.65	99.11	47.29	199.38	293.55	70.36	54.67	131.24	197.67	78.85
Feb-12	94.38	124.61	114.07	103.27	55.23	294.81	298.70	79.96	63.82	183.18	185.88	86.85
Mar-12	116.74	82.63	136.90	119.46	69.56	137.30	338.49	92.62	79.90	101.44	215.31	100.55
Apr-12	91.61	81.43	93.24	91.10	118.64	236.07	180.55	126.15	112.71	134.65	127.20	115.79
May-12	86.95	48.07	109.36	89.87	91.74	171.72	159.94	98.94	90.69	90.62	129.04	96.26
Jun-12	94.40	39.24	65.03	80.15	72.91	246.87	93.56	78.33	77.63	110.70	76.13	78.87
Jul-12	90.72	61.05	71.49	82.03	96.54	292.14	80.66	99.49	95.27	140.57	75.06	94.33
Aug-12	93.37	68.99	70.79	84.19	86.51	374.05	85.78	92.66	88.01	173.97	76.62	90.16
Sep-12	74.64	83.72	69.70	74.05	86.10	361.03	105.43	93.59	83.59	179.16	83.60	87.82
Oct-12	102.99	128.68	82.83	99.45	91.71	213.89	74.60	92.97	94.18	158.00	79.63	94.89
Nov-12	93.76	44.72	141.45	103.29	95.49	233.12	65.37	96.04	95.11	109.55	111.86	98.18
Dec-12	63.22	50.31	104.50	74.37	98.57	158.87	146.87	103.75	90.82	87.67	120.98	95.06
Jan-13	85.93	62.38	83.88	83.00	87.83	372.75	110.08	95.77	87.41	169.19	94.07	92.00
Feb-13	90.96	53.87	95.50	88.69	68.95	403.76	112.28	79.66	73.78	174.28	102.03	82.33
Mar-13	90.36	60.33	95.83	89.06	60.17	361.98	304.13	86.28	66.79	164.14	176.85	87.11
Apr-13	90.73	50.54	69.93	80.53	71.36	402.71	99.15	80.75	75.61	171.74	81.30	80.68
May-13	88.31	74.43	123.78	97.61	68.03	162.68	246.07	84.38	72.48	104.80	171.34	88.29
Jun-13	73.09	62.40	82.76	74.95	49.67	216.77	317.77	74.81	54.80	115.52	174.16	74.85
Jul-13	69.57	91.92	86.93	76.98	49.67	472.98	259.57	75.66	54.03	223.06	154.07	76.05
Aug-13	56.81	198.58	112.02	87.32	51.38	169.49	346.51	77.63	52.57	188.57	203.22	80.50
Sep-13	52.92	98.69	128.49	80.14	60.55	96.27	314.85	81.75	58.88	97.86	200.97	81.27
Oct-13	72.43	89.96	234.34	122.84	55.09	336.11	200.00	72.80	58.89	174.67	220.99	87.59
Nov-13	78.40	114.17	104.55	89.77	56.35	135.70	352.14	81.82	61.19	121.58	200.85	84.17
Dec-13	79.88	52.89	150.80	98.56	36.08	68.09	121.97	43.67	45.68	58.12	139.59	59.89
Jan-14	73.47	65.58	148.82	95.36	40.16	112.69	235.89	57.44	47.46	81.79	182.69	68.65
Feb-14	71.85	218.98	111.42	98.18	36.06	128.18	148.29	47.06	43.91	187.73	125.76	62.17
Mar-14	49.68	48.40	70.73	55.88	33.07	62.41	271.48	52.85	36.71	53.22	148.81	53.75
Apr-14	55.07	95.40	73.26	64.50	31.30	48.60	235.30	48.06	36.52	79.30	136.29	52.92
May-14	54.16	66.03	85.68	64.80	35.58	63.27	293.74	56.91	39.65	65.08	166.60	59.24
Jun-14	40.95	74.44	165.62	81.73	30.07	90.32	423.69	62.98	32.46	79.90	265.99	68.52
Jul-14	42.94	49.51	89.64	57.63	28.44	92.74	245.09	47.23	31.62	64.39	150.10	50.30
Aug-14	35.05	21.17	94.66	51.61	30.05	99.36	150.12	41.19	31.15	48.08	116.23	44.27
Sep-14	61.15	72.40	381.29	158.52	20.43	24.07	296.07	42.65	29.36	55.77	348.15	76.90
Oct-14	62.14	45.77	115.69	76.64	23.24	36.11	226.98	39.88	31.77	42.44	158.97	50.75
Nov-14	46.81	34.17	105.86	63.33	4.88	41.75	94.89	12.91	14.08	36.78	101.59	27.81
Dec-14	44.19	20.58	136.62	69.67	12.65	31.21	204.12	28.43	19.57	24.23	162.88	40.62
Jan-15	97.71	38.27	74.06	84.77	11.55	60.68	57.66	16.31	30.44	45.98	67.68	36.55
Feb-15	71.30	124.86	94.53	83.54	26.67	38.45	95.33	32.44	36.46	95.12	94.84	47.54
Mar-15	64.28	182.98	83.66	81.75	44.13	56.17	34.36	43.60	48.55	139.34	64.49	54.88
Apr-15	49.31	61.37	208.66	98.41	26.63	76.38	39.96	28.78	31.61	66.53	143.04	49.36
May-15	42.88	43.39	216.27	95.07	28.11	40.67	56.90	30.70	31.35	42.45	154.29	49.72
Jun-15	78.67	126.74	295.11	148.47	32.59	24.09	68.85	35.32	42.69	91.41	207.11	68.76
Jul-15	44.68	50.29	145.99	75.70	26.93	46.37	49.64	29.17	30.82	48.94	108.52	42.92
Aug-15	38.14	99.68	129.36	71.61	45.78	64.29	71.11	48.21	44.10	87.50	106.70	55.13
Sep-15	60.85	92.51	199.49	105.64	29.34	20.06	51.99	30.96	36.25	67.57	142.12	53.03
Oct-15	62.42	62.89	212.82	107.69	31.02	11.11	44.44	31.67	37.91	45.07	147.33	54.14
Nov-15	45.57	39.33	238.19	102.88	26.27	17.40	40.06	27.19	30.51	31.78	161.13	49.56
Dec-15	34.71	208.98	176.25	94.37	33.45	195.75	34.85	37.07	33.73	204.43	121.25	54.00
Jan-16	27.14	35.88	120.17	55.97	31.32	17.34	27.96	30.75	30.41	29.50	84.31	38.21
Feb-16	50.26	76.62	164.40	87.17	26.11	19.23	42.37	27.27	31.41	56.87	116.94	44.97
Mar-16	58.84	53.63	207.38	103.00	26.41	31.21	49.83	28.40	33.52	45.91	146.10	50.45
Apr-16	37.74	52.85	149.04	72.69	39.06	27.77	41.44	39.01	38.77	44.22	107.19	48.97
May-16	31.41	20.98	113.83	55.17	30.59	31.63	35.37	31.00	30.77	24.65	83.31	38.14
Jun-16	37.34	36.39	106.85	58.15	29.96	24.09	22.95	29.27	31.58	32.15	74.22	37.81



Índices de Ventas de Inmuebles en Córdoba Series desestacionalizadas - Octubre de 2011 = 100

Mes	Series Desestacionalizadas											
	No Financiado				Financiado				No Financiado + Financiado			
	Deptos y casas	Cocheras	Lotes	Índice No Financiado	Deptos y casas	Cocheras	Lotes	Índice No Financiado	Deptos y casas	Cocheras	Lotes	Índice No Financiado
Jul-16	44.50	57.15	96.49	61.37	11.73	9.27	59.98	15.55	18.92	40.67	82.29	29.10
Aug-16	50.99	39.98	105.25	66.23	7.77	46.76	48.53	11.89	17.25	42.31	83.19	27.95
Sep-16	43.31	29.86	114.49	63.40	16.27	20.06	23.11	16.90	22.20	26.48	78.95	30.64
Oct-16	39.40	92.50	116.84	67.90	16.11	5.56	79.37	20.96	21.22	62.58	102.27	34.84
Nov-16	63.93	58.24	159.85	92.22	12.89	10.44	61.15	16.72	24.09	41.79	121.46	39.03
Dec-16	68.40	53.48	206.30	108.41	18.79	2.84	52.27	21.14	29.67	36.05	146.40	46.93
Jan-17	52.30	29.47	190.04	91.48	24.86	17.34	62.90	27.75	30.88	25.30	140.59	46.59
Feb-17	60.97	18.54	143.85	81.73	29.38	25.64	59.32	31.70	36.31	20.98	110.97	46.49
Mar-17	29.60	18.75	160.25	67.82	12.44	31.21	89.35	19.03	16.21	23.03	132.67	33.45
Apr-17	41.03	39.23	116.94	63.68	8.66	0.00	105.07	16.21	15.76	25.73	112.32	30.24
May-17	27.94	19.79	107.70	51.13	20.67	31.63	89.20	26.41	22.27	23.86	100.50	33.72
Jun-17	37.82	16.44	116.01	59.24	17.45	84.30	37.98	20.55	21.92	39.79	85.66	31.98
Jul-17	40.21	29.50	112.76	60.98	15.27	69.56	89.00	22.36	20.74	43.29	103.52	33.77
Aug-17	58.53	21.50	113.55	71.44	22.87	93.51	109.81	31.38	30.69	46.28	112.09	43.22
Sep-17	33.58	44.88	85.73	50.37	18.28	40.11	102.68	25.53	21.63	43.24	92.32	32.87
Oct-17	30.00	17.25	117.59	55.09	23.76	72.22	32.67	25.53	25.13	36.17	84.56	34.26
Nov-17	40.73	17.51	118.41	61.81	23.29	76.55	67.07	27.95	27.11	37.83	98.44	37.96
Dec-17	36.95	8.79	132.67	62.97	18.40	62.41	37.26	20.87	22.47	27.24	95.56	33.31
Jan-18	70.06	36.88	167.00	95.96	24.67	26.01	112.79	31.78	34.62	33.14	145.92	50.75
Feb-18	42.90	32.81	135.59	69.78	13.46	64.09	112.96	22.55	19.92	43.58	126.79	36.51
Mar-18	53.17	12.63	136.43	74.23	24.74	87.37	99.66	32.11	30.98	38.35	122.12	44.56
Apr-18	54.45	21.58	192.69	92.79	24.05	138.87	99.68	32.61	30.72	61.94	156.51	50.40
May-18	55.87	57.78	141.31	81.75	19.78	167.20	99.27	29.35	27.69	95.44	124.96	44.84
Jun-18	32.16	14.35	98.15	50.26	18.47	18.06	62.76	22.02	21.47	15.63	84.38	30.37
Jul-18	29.10	19.42	92.27	47.15	19.26	51.01	63.85	23.53	21.42	30.29	81.22	30.51
Aug-18	57.04	31.05	101.39	67.83	12.30	40.91	45.40	15.57	22.11	34.45	79.62	31.02
Sep-18	55.80	14.13	67.24	55.15	11.18	24.07	45.94	14.25	20.97	17.55	58.95	26.34
Oct-18	19.50	8.15	36.67	23.55	11.98	141.67	74.24	19.78	13.63	54.10	51.29	20.90
Nov-18	30.29	17.23	113.77	54.11	8.47	156.57	55.23	15.43	13.26	65.18	91.01	26.86
Dec-18	34.18	3.99	85.08	46.52	8.30	30.40	74.52	14.10	13.98	13.08	80.97	23.68
Jan-19	25.84	17.81	94.03	45.56	16.93	111.45	38.04	20.67	18.89	50.04	72.26	28.03
Feb-19	28.59	3.87	126.39	55.58	17.83	109.87	60.53	23.25	20.19	40.35	100.78	32.81
Mar-19	24.59	2.22	79.29	38.84	17.56	227.35	42.08	24.06	19.10	79.70	64.82	28.43
Apr-19	36.87	2.33	106.73	54.49	5.96	14.88	40.27	8.91	12.74	6.65	80.88	22.38
May-19	24.35	0.53	99.19	44.52	7.72	87.15	48.13	12.68	11.37	30.34	79.33	22.09
Jun-19	19.42	2.01	57.07	29.03	13.80	25.81	52.49	17.17	15.03	10.20	55.29	20.67
Jul-19	29.77	2.24	61.62	36.65	19.89	39.75	25.89	20.80	22.05	15.15	47.72	25.48
Aug-19	34.83	0.78	114.79	55.54	23.40	0.00	37.09	23.99	25.91	0.52	84.57	33.32
Sep-19	25.13	0.63	36.29	26.08	21.02	68.77	50.25	24.40	21.92	24.08	41.72	24.90
Oct-19	35.90	1.10	46.84	35.78	12.74	62.27	27.61	15.00	17.82	22.15	39.36	21.14
Nov-19	15.71	2.17	32.61	19.47	23.74	33.65	44.84	25.64	21.98	13.00	37.37	23.82
Dec-19	25.87	2.58	39.23	27.60	14.01	7.68	62.55	17.77	16.61	4.34	48.30	20.68
Jan-20	13.56	3.20	46.50	22.45	12.83	23.47	87.82	19.08	12.99	10.18	62.57	20.08
Feb-20	18.26	1.57	39.19	22.91	27.48	52.06	90.09	33.03	25.45	18.94	58.98	30.04
Mar-20	13.20	2.19	35.14	18.72	11.98	2.41	45.67	14.48	12.25	2.27	39.23	15.73
Apr-20	12.46	9.63	38.38	19.97	8.64	8.06	19.67	9.51	9.48	9.09	31.10	12.60
May-20	22.66	13.34	81.00	39.29	8.50	3.50	65.40	12.96	11.60	9.95	74.93	20.74
Jun-20	32.26	16.82	99.09	50.85	15.86	16.30	182.99	29.29	19.46	16.64	131.72	35.66
Jul-20	27.95	10.57	114.39	52.24	19.78	3.59	241.87	37.27	21.57	8.17	163.97	41.69
Aug-20	22.14	4.39	82.64	38.59	11.44	6.78	203.99	26.80	13.79	5.21	129.84	30.29
Sep-20	20.99	2.96	49.62	27.83	16.84	1.55	241.84	34.58	17.75	2.48	124.38	32.58
Oct-20	26.84	3.81	53.97	32.74	20.69	10.74	478.42	57.23	22.04	6.20	219.05	49.99
Nov-20	18.93	2.72	26.42	19.59	37.60	10.77	459.00	70.87	33.51	5.49	194.66	55.71
Dec-20	16.21	2.83	19.96	16.02	17.67	4.39	312.61	41.07	17.35	3.37	133.78	33.67
Jan-21	17.70	3.33	39.97	22.99	17.52	6.71	399.86	48.00	17.56	4.49	179.95	40.60
Feb-21	11.16	2.53	40.02	18.99	12.34	6.61	307.42	35.91	12.08	3.94	144.02	30.91
Mar-21	34.64	9.88	40.88	34.08	22.22	6.44	287.71	43.20	24.94	8.69	136.88	40.50



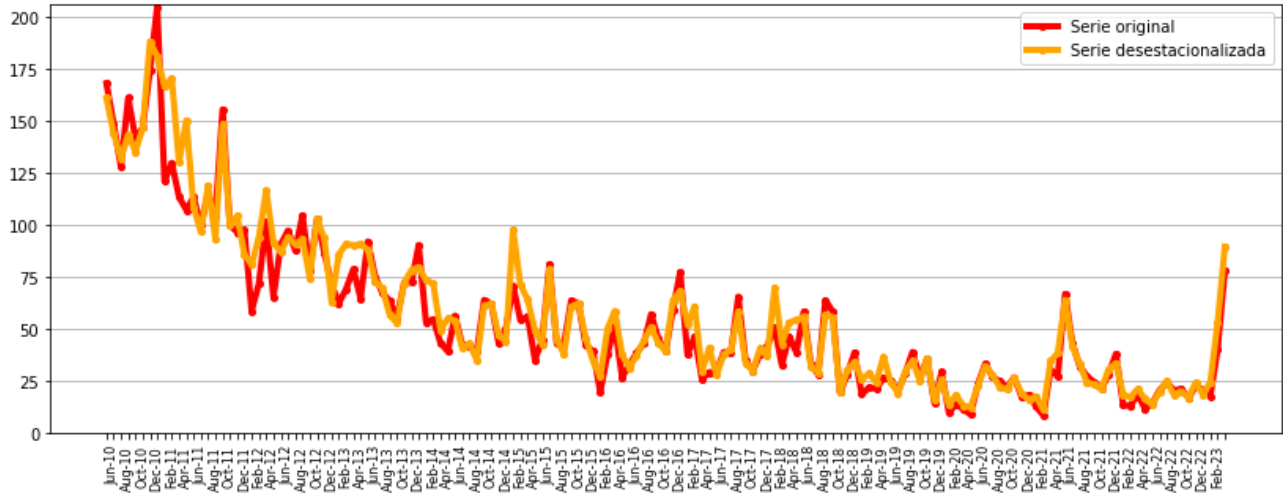
Índices de Ventas de Inmuebles en Córdoba Series desestacionalizadas - Octubre de 2011 = 100

Mes	Series Desestacionalizadas											
	No Financiado				Financiado				No Financiado + Financiado			
	Deptos y casas	Cocheras	Lotes	Índice No Financiado	Deptos y casas	Cocheras	Lotes	Índice No Financiado	Deptos y casas	Cocheras	Lotes	Índice No Financiado
Apr-21	38.46	3.59	31.40	32.92	26.88	14.32	251.93	44.68	29.42	7.29	117.17	41.20
May-21	64.14	4.39	29.31	47.80	26.70	11.65	68.67	29.74	34.91	6.89	44.62	35.08
Jun-21	42.07	2.47	23.53	32.61	29.01	15.53	83.75	33.12	31.87	6.97	46.96	32.97
Jul-21	33.27	2.59	30.64	29.47	29.85	2.39	34.63	29.64	30.60	2.52	32.19	29.59
Aug-21	24.41	2.47	41.17	27.30	28.92	0.00	116.55	35.33	27.93	1.62	70.49	32.96
Sep-21	23.45	1.60	34.23	24.55	21.33	10.34	100.76	27.48	21.80	4.61	60.11	26.61
Oct-21	21.17	1.84	49.40	27.76	14.76	1.43	65.14	18.52	16.17	1.70	55.52	21.25
Nov-21	30.75	5.85	44.28	32.37	10.93	7.18	86.54	16.92	15.28	6.31	60.72	21.49
Dec-21	33.64	5.23	44.27	34.05	29.63	10.24	88.84	33.97	30.51	6.95	61.60	33.99
Jan-22	18.51	3.24	57.63	28.78	24.94	8.94	115.36	31.86	23.53	5.20	80.08	30.95
Feb-22	17.34	0.35	62.67	29.31	13.39	0.47	90.28	19.29	14.26	0.39	73.41	22.25
Mar-22	21.23	0.58	95.52	41.54	11.57	0.00	43.40	13.87	13.68	0.38	75.24	22.05
Apr-22	16.44	1.20	72.69	31.86	14.01	2.56	158.59	25.37	14.54	1.67	106.10	27.29
May-22	13.68	0.59	36.54	19.27	10.52	2.33	122.73	19.36	11.22	1.19	70.06	19.33
Jun-22	19.96	0.84	65.34	31.73	12.28	0.44	111.46	19.99	13.96	0.70	83.28	23.46
Jul-22	25.08	0.55	125.93	53.00	14.92	1.71	165.05	26.69	17.15	0.95	141.14	34.47
Aug-22	18.39	0.87	66.42	31.11	8.10	0.00	76.61	13.43	10.35	0.57	70.38	18.65
Sep-22	20.20	1.60	41.07	24.65	14.16	2.07	59.27	17.52	15.49	1.76	48.15	19.63
Oct-22	17.04	0.68	25.45	17.96	5.62	0.41	22.55	6.87	8.13	0.59	24.32	10.15
Nov-22	24.39	1.78	75.20	37.45	36.38	0.00	144.23	44.26	33.75	1.17	102.05	42.25
Dec-22	18.44	0.89	86.72	37.25	14.72	0.00	40.86	16.50	15.54	0.59	68.89	22.64
Jan-23	24.56	1.81	74.62	37.38	8.93	0.00	28.68	10.32	12.36	1.19	56.75	18.32
Feb-23	52.95	1.77	69.67	52.96	5.73	0.00	34.78	7.94	16.08	1.16	56.10	21.24
Mar-23	89.68	4.65	84.44	79.76	15.49	0.00	39.49	17.09	31.76	3.05	66.96	35.61
% últ. 3m / 3m previos	179.3	145.5	22.1	83.6	-46.9	-98.4	-50.4	-47.7	4.8	130.8	-7.9	0.2



Ventas no financiadas de departamentos

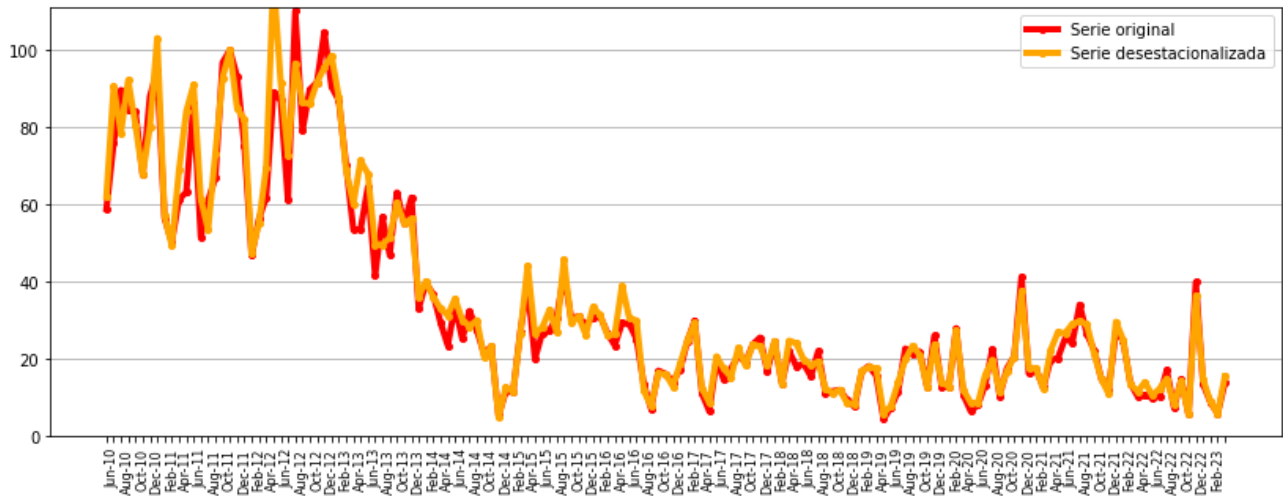
Octubre de 2011 = 100



Fuente: Economic Trends S.A para la Cámara Empresarial de Desarrollistas Urbanos de Córdoba

Ventas financiadas de departamentos

Octubre de 2011 = 100

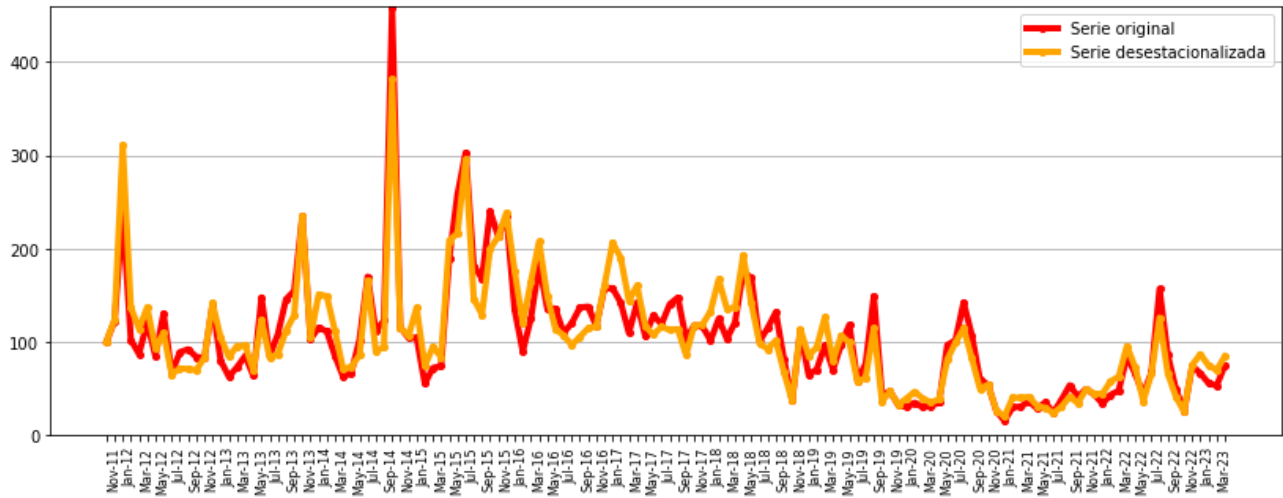


Fuente: Economic Trends S.A para la Cámara Empresarial de Desarrollistas Urbanos de Córdoba



Ventas no financiadas de lotes

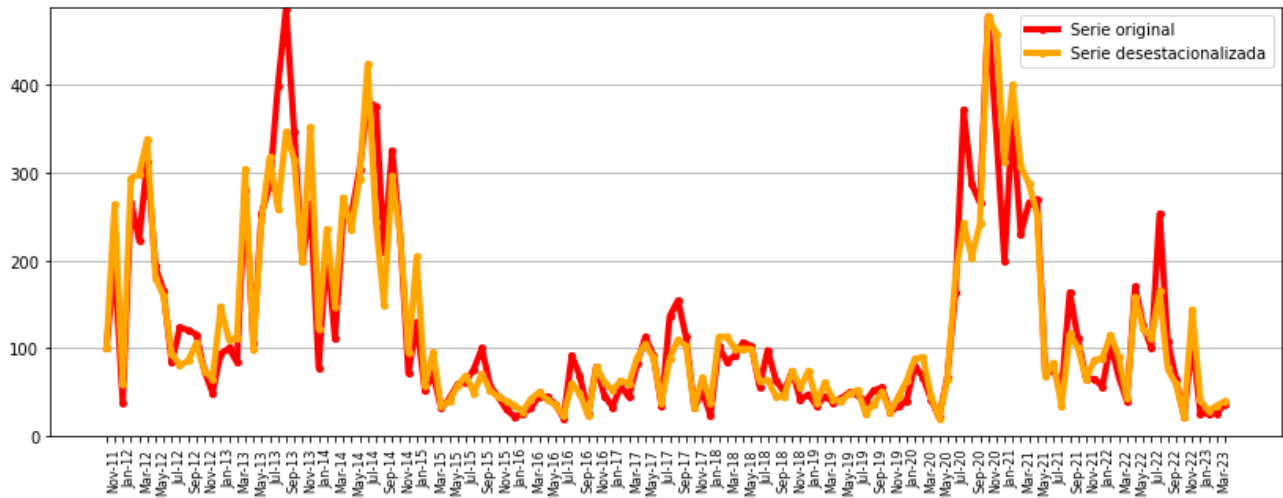
Octubre de 2011 = 100



Fuente: Economic Trends S.A para la Cámara Empresarial de Desarrollistas Urbanos de Córdoba

Ventas financiadas de lotes

Octubre de 2011 = 100

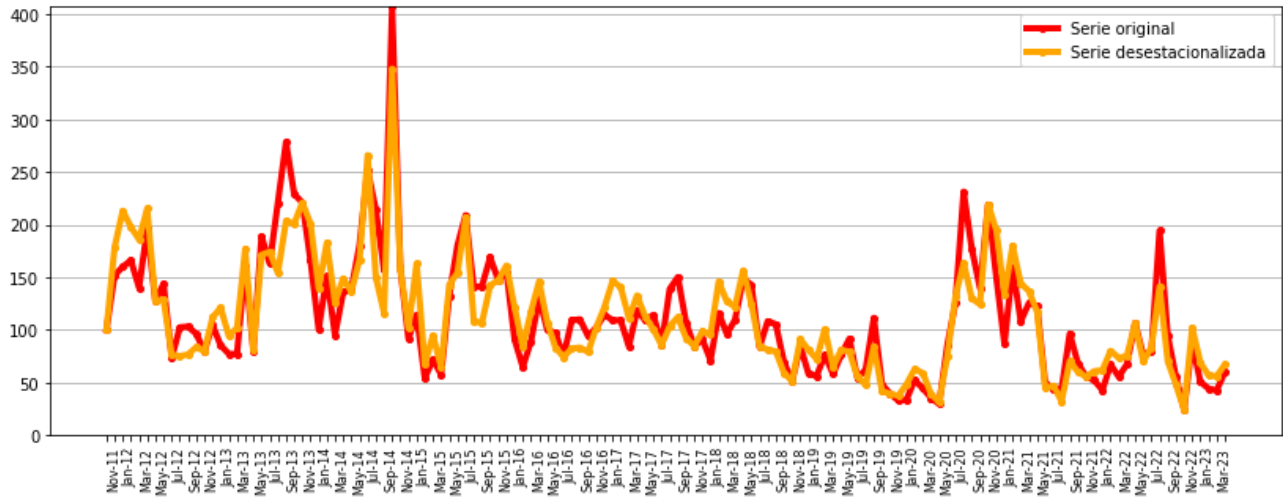


Fuente: Economic Trends S.A para la Cámara Empresarial de Desarrollistas Urbanos de Córdoba



Ventas financiadas y no financiadas de lotes

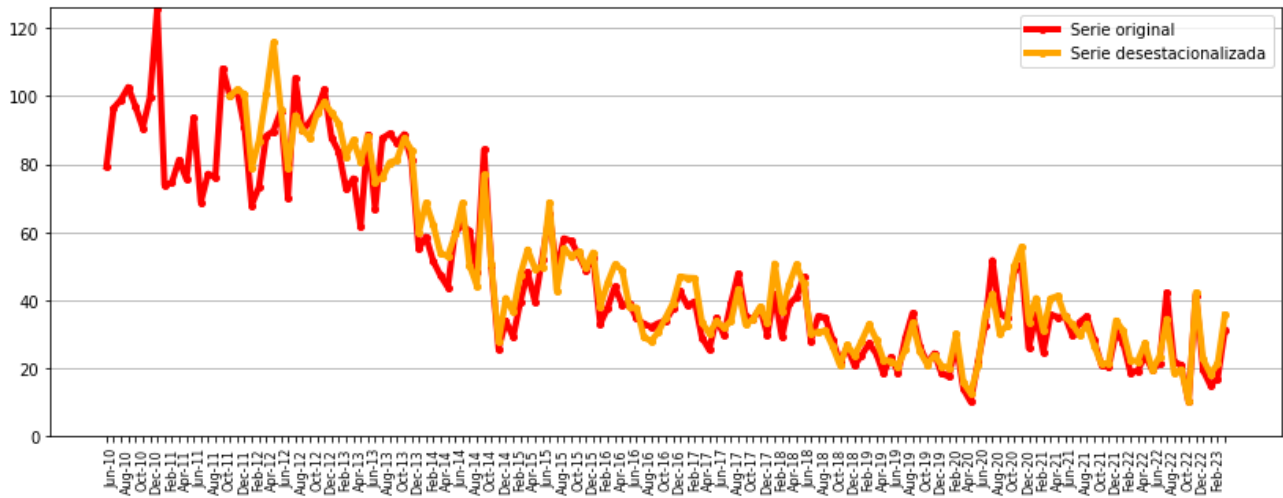
Octubre de 2011 = 100



Fuente: Economic Trends S.A para la Cámara Empresarial de Desarrollistas Urbanos de Córdoba

Índice Total - Ventas financiadas y no financiadas

Octubre de 2011 = 100

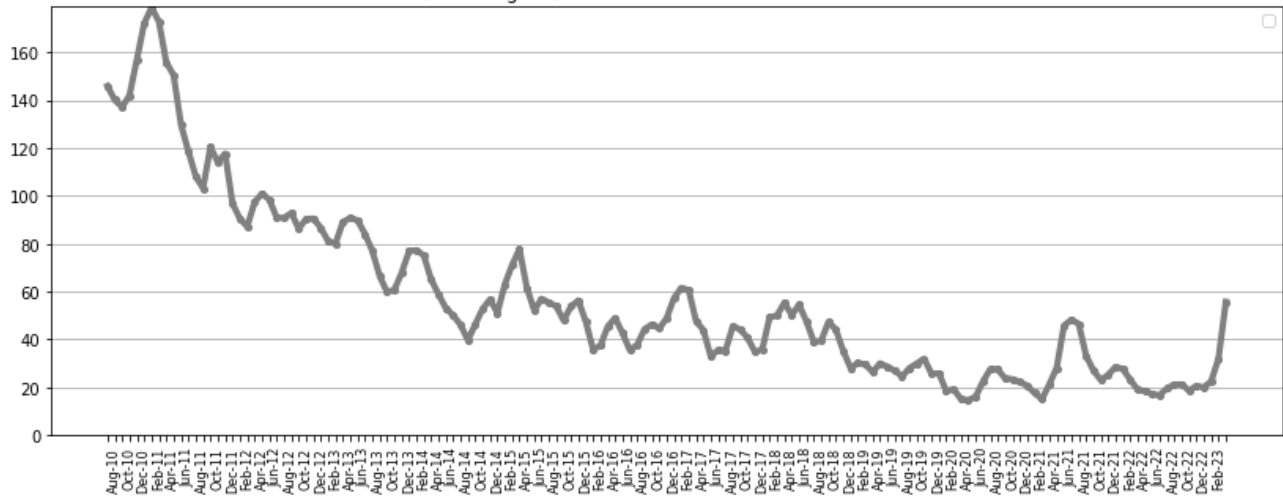


Fuente: Economic Trends S.A para la Cámara Empresarial de Desarrollistas Urbanos de Córdoba



Ventas no financiadas de departamentos

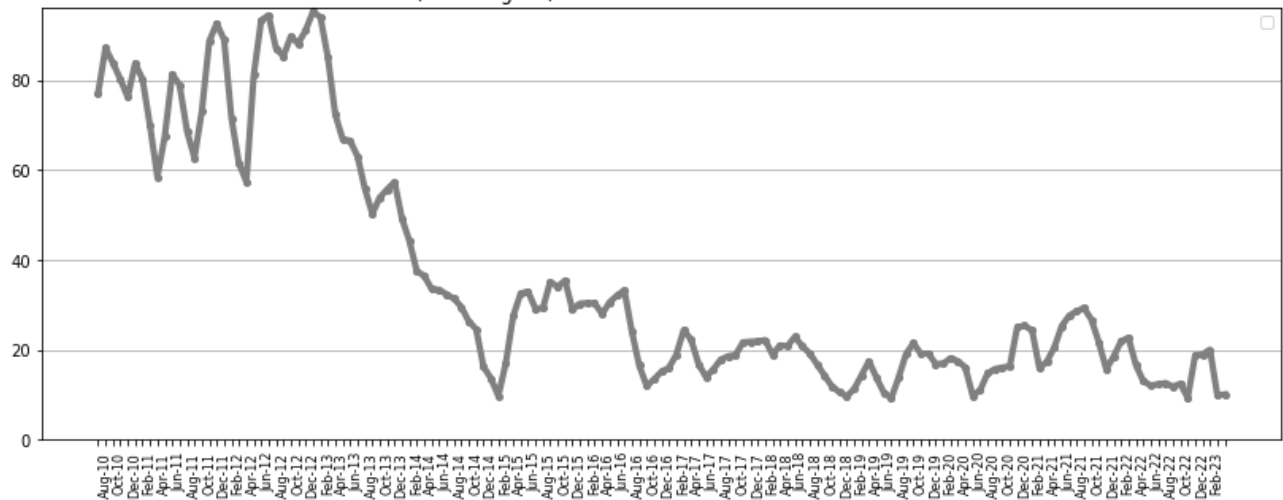
Oct 2011 = 100 (serie original) - Promedio móvil 3 meses - Serie desestacionalizada



Fuente: Economic Trends S.A para la Cámara Empresarial de Desarrollistas Urbanos de Córdoba

Ventas financiadas de departamentos

Oct 2011 = 100 (serie original) - Promedio móvil 3 meses - Serie desestacionalizada

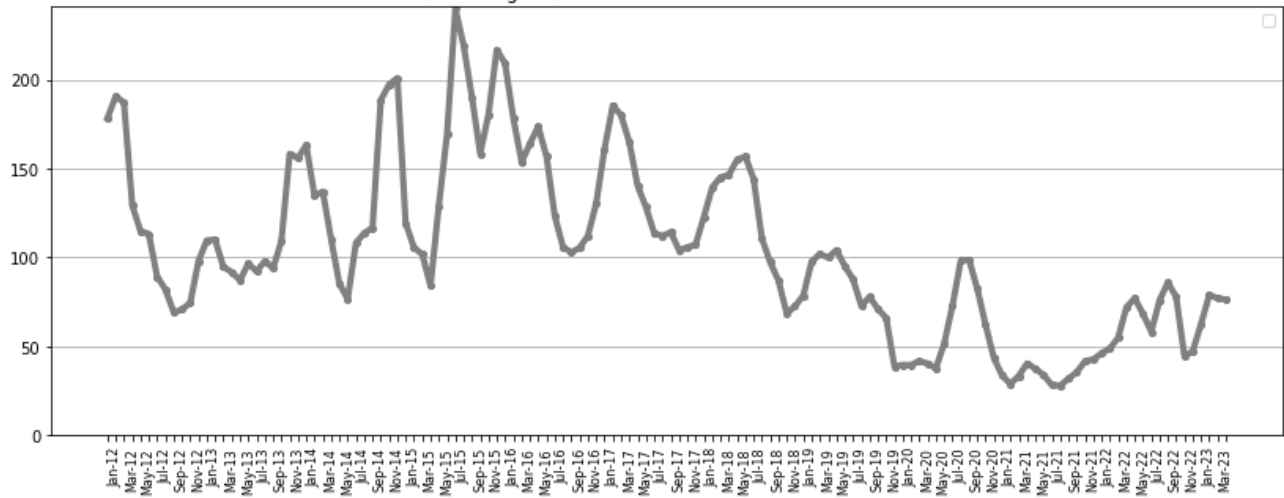


Fuente: Economic Trends S.A para la Cámara Empresarial de Desarrollistas Urbanos de Córdoba



Ventas no financiadas de lotes

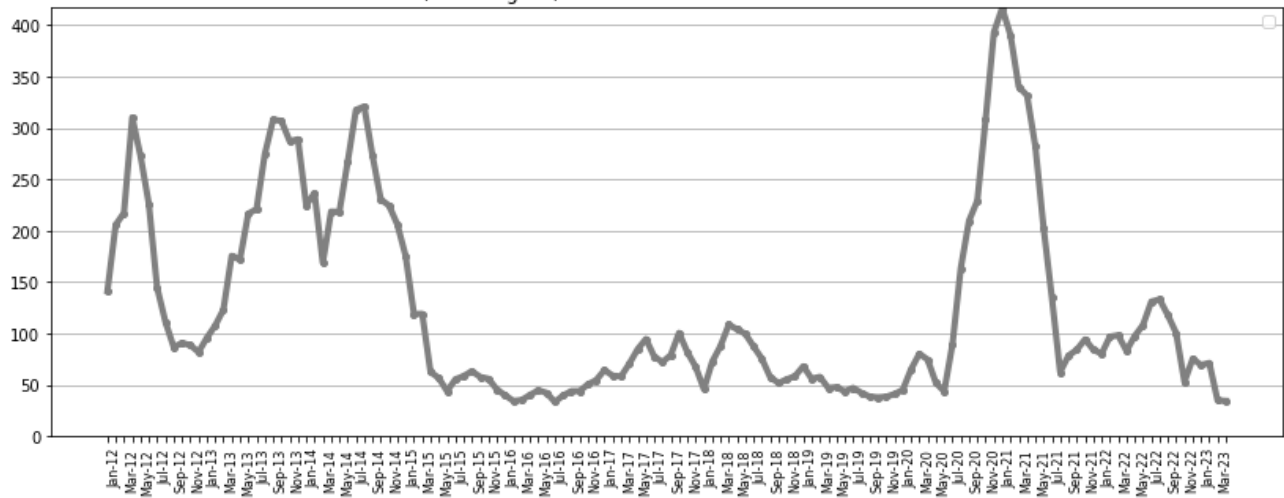
Oct 2011 = 100 (serie original) - Promedio móvil 3 meses - Serie desestacionalizada



Fuente: Economic Trends S.A para la Cámara Empresarial de Desarrollistas Urbanos de Córdoba

Ventas financiadas de lotes

Oct 2011 = 100 (serie original) - Promedio móvil 3 meses - Serie desestacionalizada

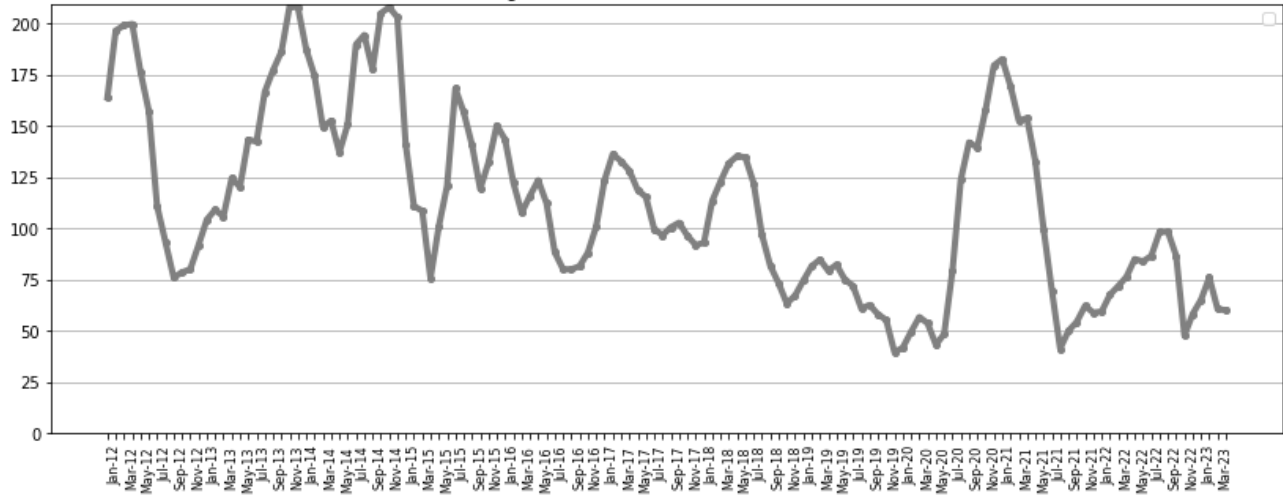


Fuente: Economic Trends S.A para la Cámara Empresarial de Desarrollistas Urbanos de Córdoba



Ventas financiadas y no financiadas de lotes

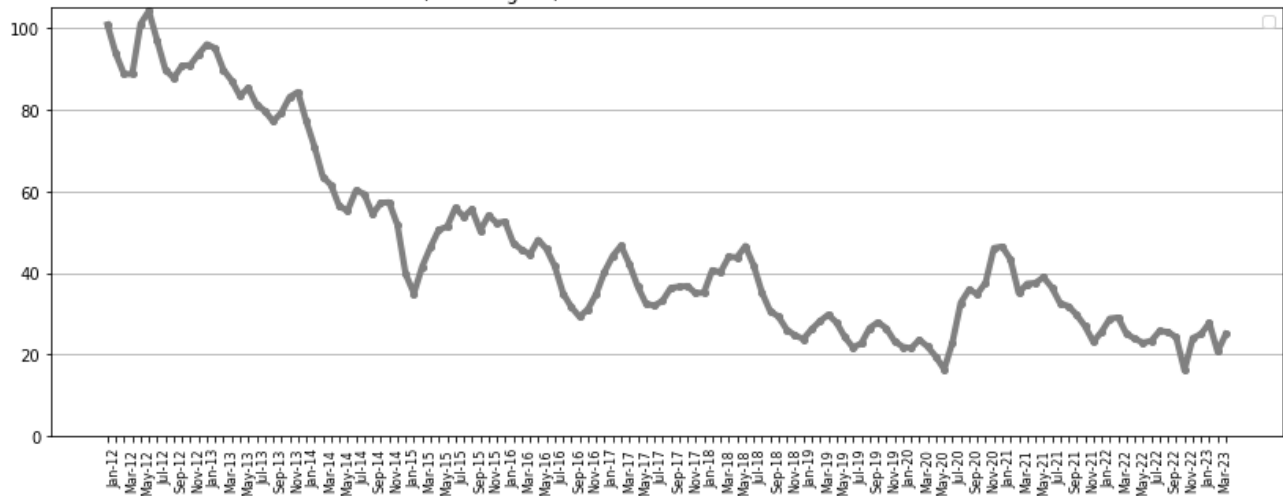
Oct 2011 = 100 (serie original) - Promedio móvil 3 meses - Serie desestacionalizada



Fuente: Economic Trends S.A para la Cámara Empresarial de Desarrollistas Urbanos de Córdoba

Índice Total - Ventas financiadas y no financiadas

Oct 2011 = 100 (serie original) - Promedio móvil 3 meses - Serie desestacionalizada

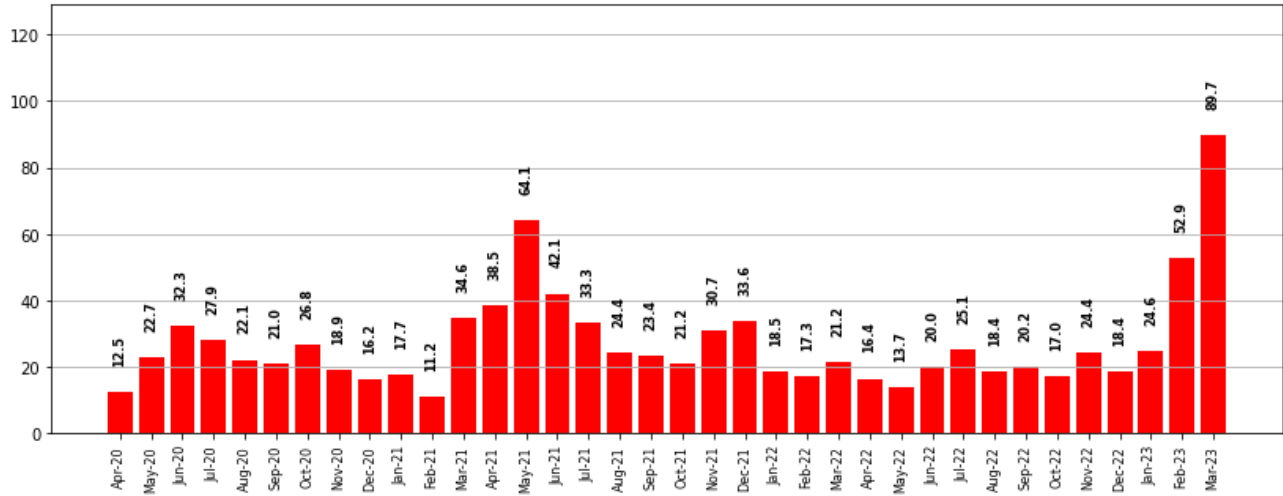


Fuente: Economic Trends S.A para la Cámara Empresarial de Desarrollistas Urbanos de Córdoba



Ventas no financiadas de departamentos

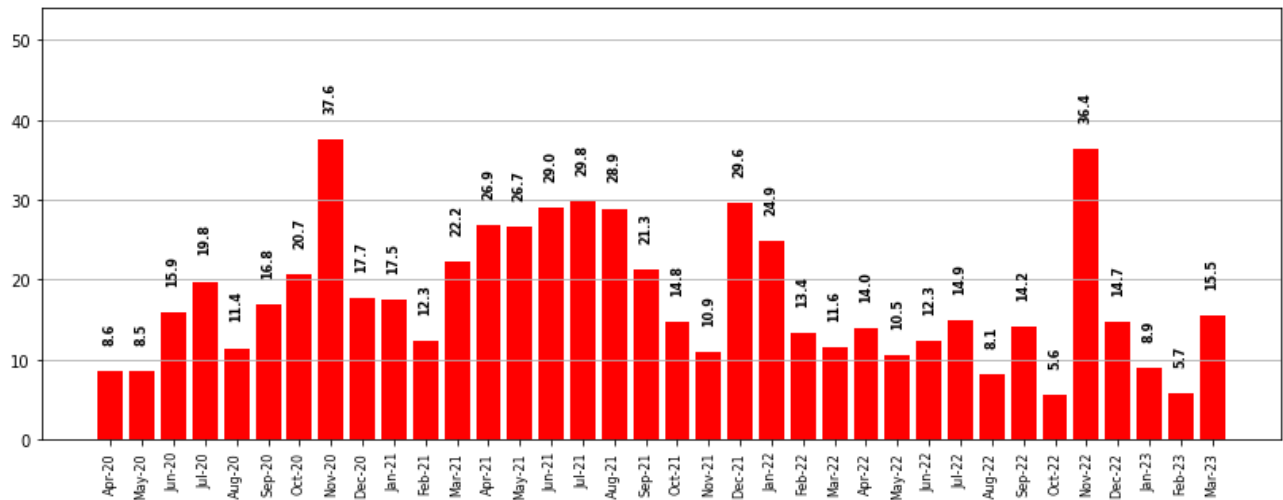
Oct 2011 = 100 - Serie desestacionalizada - Últimos 36 meses



Fuente: Economic Trends S.A para la Cámara Empresarial de Desarrollistas Urbanos de Córdoba

Ventas financiadas de departamentos

Oct 2011 = 100 - Serie desestacionalizada - Últimos 36 meses

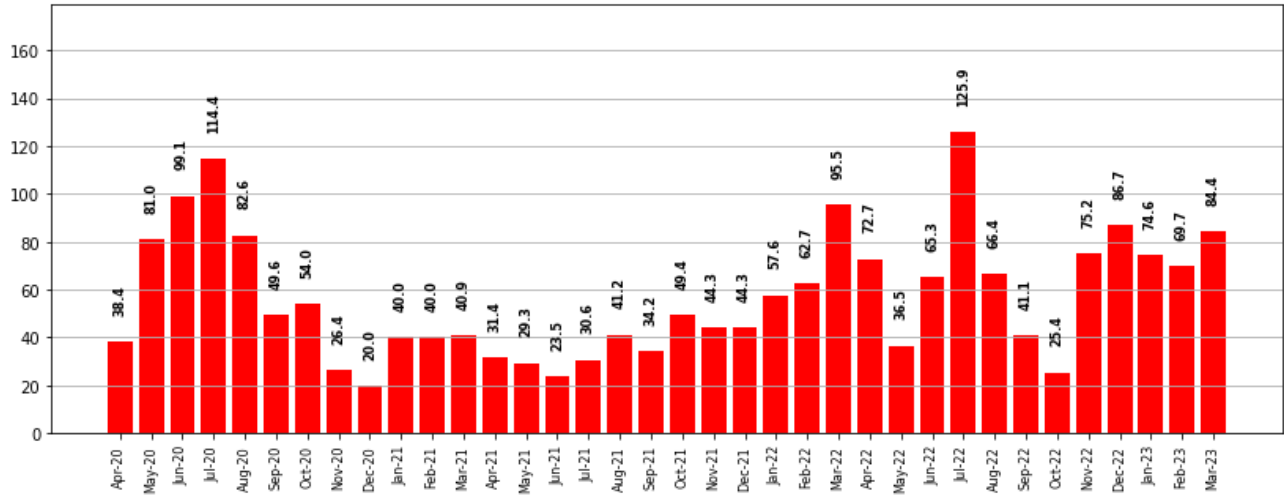


Fuente: Economic Trends S.A para la Cámara Empresarial de Desarrollistas Urbanos de Córdoba



Ventas no financiadas de lotes

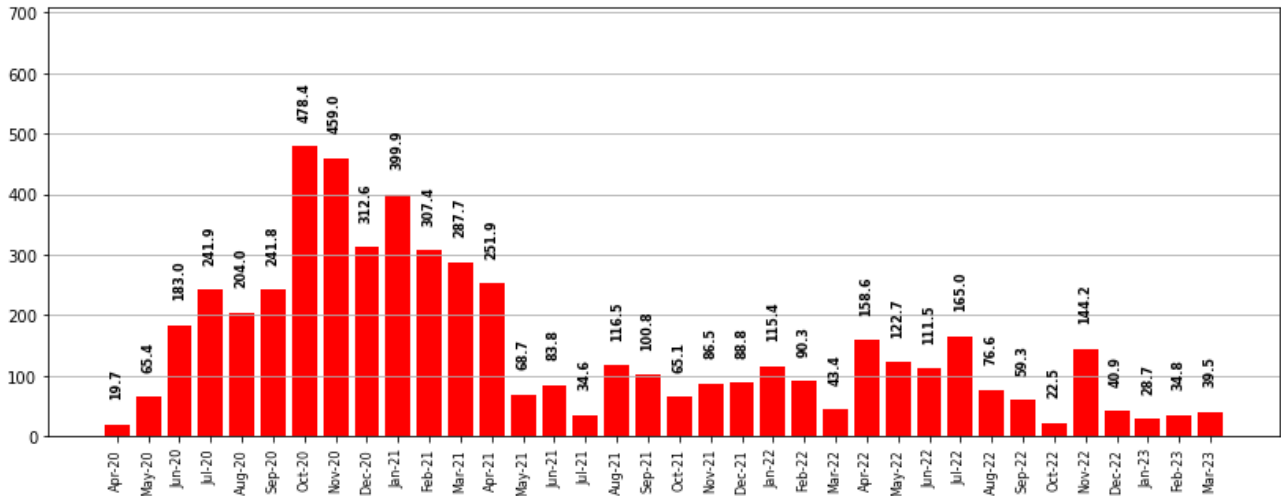
Oct 2011 = 100 - Serie desestacionalizada - Últimos 36 meses



Fuente: Economic Trends S.A para la Cámara Empresarial de Desarrollistas Urbanos de Córdoba

Ventas financiadas de lotes

Oct 2011 = 100 - Serie desestacionalizada - Últimos 36 meses

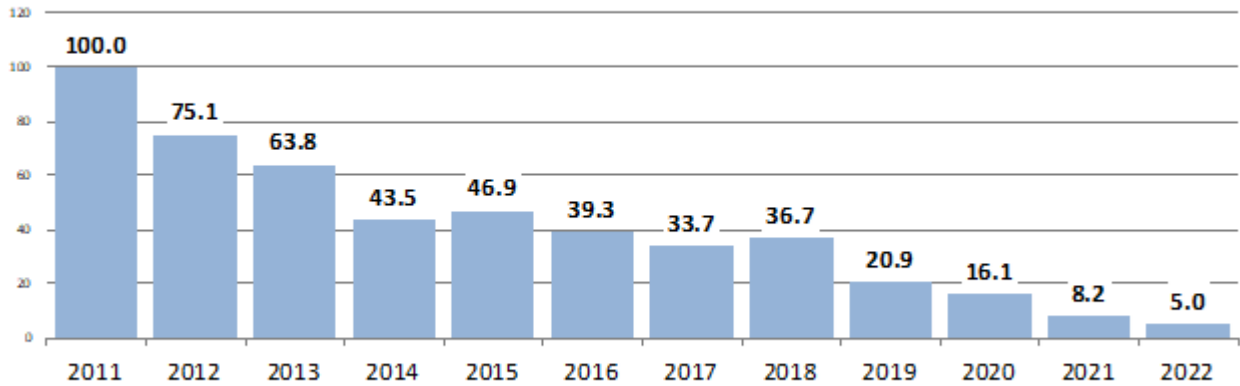


Fuente: Economic Trends S.A para la Cámara Empresarial de Desarrollistas Urbanos de Córdoba



Ventas no financiadas de departamentos

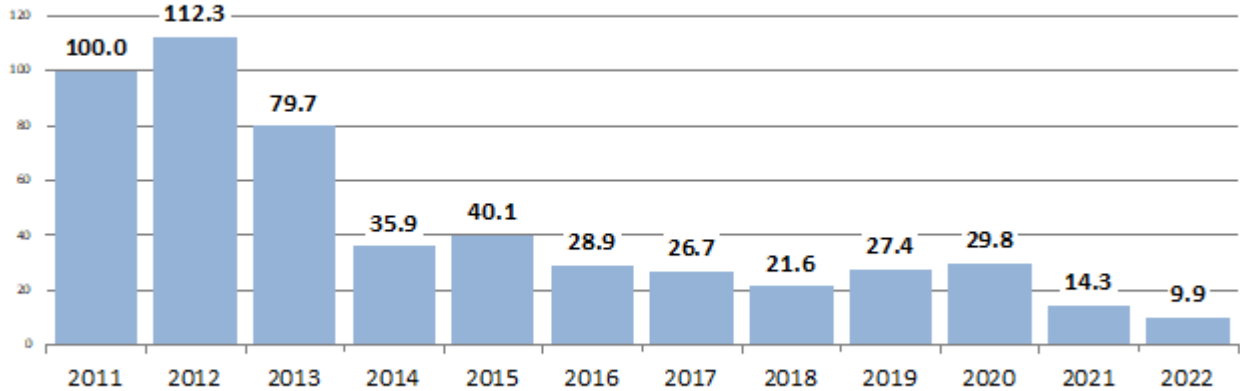
2011 = 100



Fuente: Economic Trends para la Cámara Empresarial de Desarrollistas Urbanos de Córdoba (CEDUC).
Monitor Estadístico de Ventas de Inmuebles

Ventas financiadas de departamentos

2011 = 100

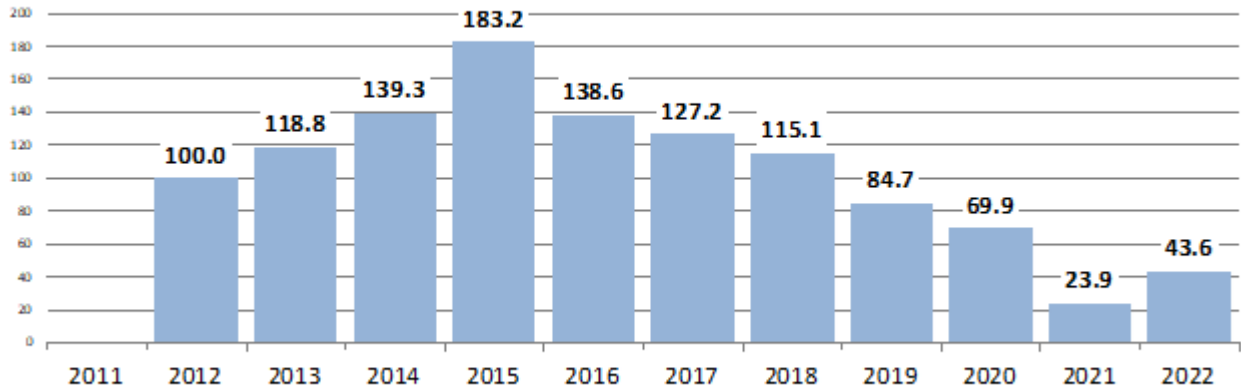


Fuente: Economic Trends para la Cámara Empresarial de Desarrollistas Urbanos de Córdoba (CEDUC).
Monitor Estadístico de Ventas de Inmuebles



Ventas no financiadas de lotes

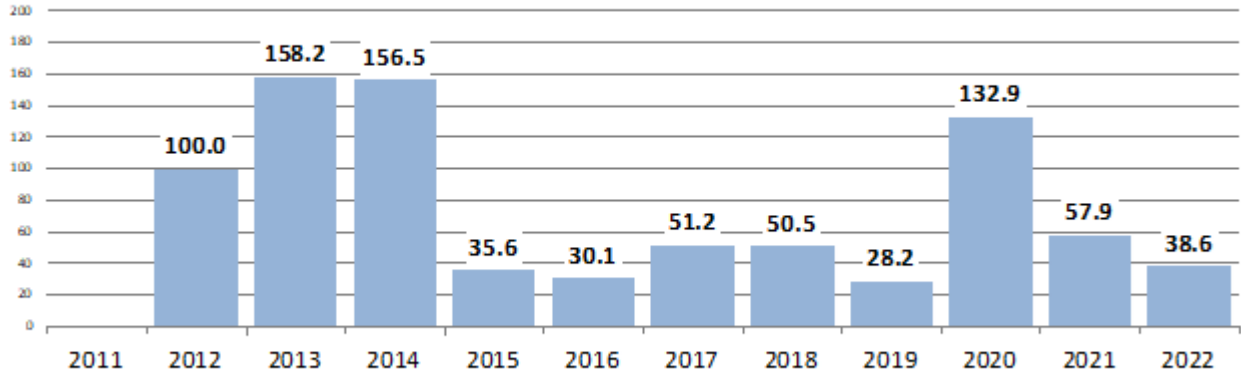
2012 = 100



Fuente: Economic Trends para la Cámara Empresarial de Desarrollistas Urbanos de Córdoba (CEDUC).
Monitor Estadístico de Ventas de Inmuebles

Ventas financiadas de lotes

2012 = 100

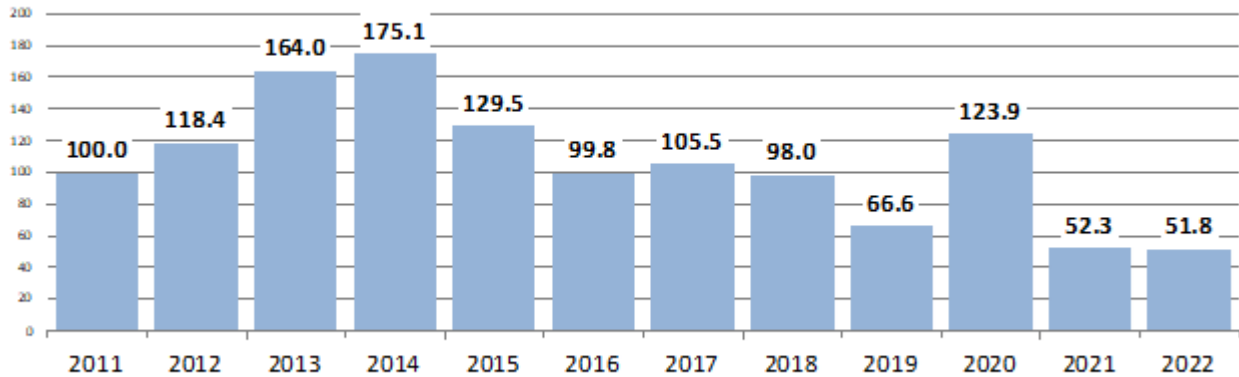


Fuente: Economic Trends para la Cámara Empresarial de Desarrollistas Urbanos de Córdoba (CEDUC).
Monitor Estadístico de Ventas de Inmuebles



Ventas financiadas y no financiadas de lotes

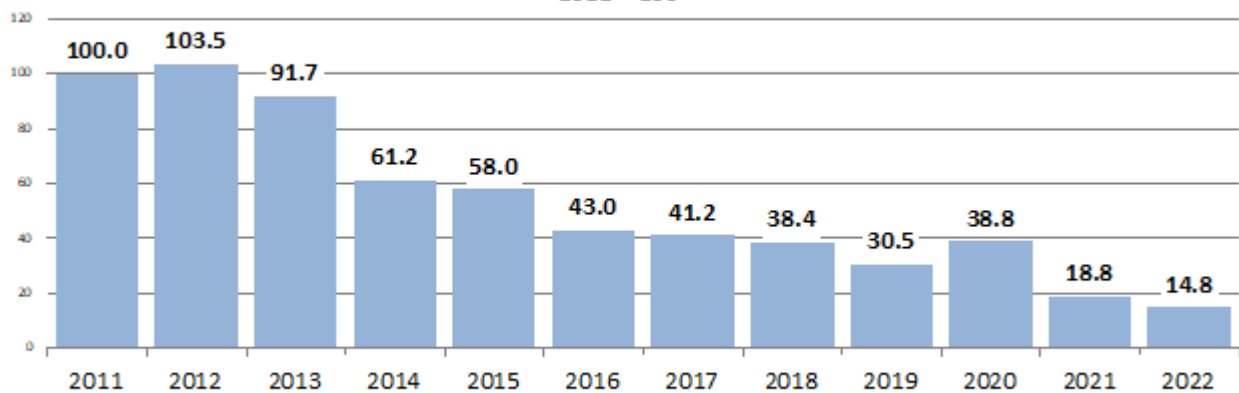
2011 = 100



Fuente: Economic Trends para la Cámara Empresarial de Desarrollistas Urbanos de Córdoba (CEDUC).
Monitor Estadístico de Ventas de Inmuebles

Índice Total - Ventas financiadas y no financiadas

2011 = 100



Fuente: Economic Trends para la Cámara Empresarial de Desarrollistas Urbanos de Córdoba (CEDUC).
Monitor Estadístico de Ventas de Inmuebles

Notas metodológicas

- 1.- Todos los índices reportados en este informe reflejan ventas efectivamente realizadas en cada mes calendario, independientemente de si las unidades vendidas fueron escrituradas o no, lo que permite medir en tiempo real la evolución de las ventas de los desarrollistas cordobeses, sin los rezagos propios de los índices basados en escrituras.
- 2.- La información utilizada para la elaboración de los distintos índices es reportada por las empresas socias de CEDUC mediante formularios electrónicos auto-administrados a través de un esquema de triangulación de correos electrónicos que permite garantizar la confidencialidad de los datos reportados ya que no es posible detectar a qué empresa corresponde cada dato individual.
- 3.- Los índices del Monitor de Ventas de Inmuebles en Córdoba están calculados en unidades homogéneas, lo que permite consolidar diferentes tipologías de inmuebles. En el caso de departamentos (de uno, dos y tres dormitorios), casas y cocheras, la unidad homogénea es la cantidad de metros cuadrados promedio por tipología. Y en el caso de lotes, tanto en barrios abiertos como en barrios cerrados, la unidad homogénea es el valor promedio de los lotes expresado en su equivalente en metros cuadrados de construcción.
- 4.- El cálculo de los índices ajusta por la eventual diferencia en la cantidad de respondientes entre mediciones, por ejemplo, por incorporación de nuevas empresas o falta de respuesta de alguna de ellas, para evitar variaciones que no se deban a los movimientos de mercado que se desea captar.
- 5.- Las series desestacionalizadas se obtuvieron aplicando el método econométrico X-11 ARIMA multiplicativo, con algoritmo escrito por Economic Trends en lenguaje de programación PYTHON.