

Córdoba, 15 de Septiembre de 2016

Índices de Ventas de Inmuebles en Córdoba

Cámara Empresarial de Desarrollistas Urbanos de Córdoba (CEDUC)

Elaborado por Economic Trends S.A. para la CEDUC

Datos al 31 de Agosto de 2016

Síntesis de principales resultados

| Tipología | Oct 2011 = 100 | | % de variación | |
|---------------------------------|----------------|-------------|---------------------------------|--|
| | Agosto 2015 | Agosto 2016 | Interanual (Ago 16 / Ago 15) | Últimos 3 meses vs 3 meses previos |
| Ventas No Financiadas | | | | |
| Departamentos y casas | 42.8 | 57.2 | 33.7 | 19.5 |
| Cocheras | 139.4 | 55.9 | -59.9 | 5.8 |
| Lotes | 168.0 | 136.7 | -18.6 | -32.6 |
| Indice de Ventas No Financiadas | 78.4 | 76.3 | -2.7 | -6.5 |
| Ventas Financiadas | | | | |
| Departamentos y casas | 41.9 | 7.1 | -83.0 | -46.0 |
| Cocheras | 30.6 | 22.2 | -27.3 | -35.9 |
| Lotes | 100.0 | 68.3 | -31.7 | -1.2 |
| Indice de Ventas Financiadas | 46.1 | 13.0 | -71.8 | -39.3 |
| Ventas Totales | | | | |
| Departamentos y casas | 42.4 | 25.0 | -40.9 | -17.1 |
| Cocheras | 82.3 | 37.7 | -54.2 | -5.0 |
| Lotes | 139.9 | 108.7 | -22.3 | -12.4 |
| Indice de Ventas Totales | 57.8 | 37.7 | -34.8 | -14.7 |

Ventas de inmuebles durante agosto de 2016, en comparación con agosto de 2015:

1.- Las **ventas no financiadas** (departamentos y casas, cocheras y lotes) durante el mes de **agosto de 2016** fueron un **2.7% inferiores** a las registradas en agosto de 2015, con mayores ventas no financiadas de departamentos y casas (+33.7%) y menores ventas no financiadas de cocheras (-59.9%) y de lotes (-18.6%).

2.- Las **ventas financiadas** (departamentos y casas, cocheras y lotes) durante el mes de **agosto de 2016** fueron un **71.8% inferiores** a las registradas en agosto de 2015, con menores ventas financiadas de departamentos y casas (-83.0%), de cocheras (-27.3%) y de lotes (-31.7%).

3.- El **total de ventas financiadas y no financiadas** durante **agosto de 2016** fue un **34.8% inferior** al nivel registrado en agosto de 2015, con menores ventas totales (financiadas y no financiadas) de departamentos y casas (-40.9%), de cocheras (-54.2%) y de lotes (-22.3%).

Ventas de inmuebles durante los últimos 3 meses en comparación con 3 meses previos:

4.- Las **ventas no financiadas** (departamentos y casas, cocheras y lotes) durante los **últimos 3 meses** fueron un **6.5% inferiores** a las registradas durante los 3 meses previos, con mayores ventas no financiadas de departamentos y casas (+19.5%) y de cocheras (+5.8%) pero menores ventas no financiadas de lotes (-32.6%).

5.- Las **ventas financiadas** (departamentos y casas, cocheras y lotes) durante los **últimos 3 meses** fueron un **39.3% inferiores** a las registradas durante los 3 meses previos, con menores ventas financiadas de departamentos y casas (-46%), de cocheras (-35.9%) y de lotes (-1.2%).

6.- El **total de ventas financiadas y no financiadas** durante los **últimos 3 meses** fue un **14.7% inferior** al nivel registrado durante los 3 meses previos, con menores ventas totales (financiadas y no financiadas) de departamentos y casas (-17.1%), de cocheras (-5%) y de lotes (-12.4%).

Para analizar más en detalle la evolución de cada uno de los índices, e interpretar mejor las tendencias en curso, es conveniente analizar el material incluido en la sección de gráficos.

Índices de Ventas de Inmuebles en Córdoba

Series originales (con estacionalidad) - Octubre de 2011 = 100

| Mes | Series originales (con estacionalidad) | | | | | | | | | | | |
|--------|--|----------|-------|----------------------|-----------------------|----------|-------|-------------------|----------------------------|----------|-------|--------------|
| | No Financiado | | | | Financiado | | | | No Financiado + Financiado | | | |
| | Departamentos y casas | Cocheras | Lotes | Indice No Financiado | Departamentos y casas | Cocheras | Lotes | Indice Financiado | Departamentos y casas | Cocheras | Lotes | Indice Total |
| may-10 | 168.2 | | | | 58.8 | | | | 84.3 | | 77.1 | 79.3 |
| jun-10 | 148.9 | | | | 75.9 | | | | 94.1 | 61.1 | 122.6 | 96.2 |
| jul-10 | 128.1 | | | | 89.7 | | | | 100.5 | 96.8 | 90.6 | 98.3 |
| ago-10 | 161.2 | | | | 84.5 | | | | 103.7 | 157.9 | 77.4 | 101.4 |
| sep-10 | 141.8 | | | | 84.1 | | | | 99.1 | 95.2 | 85.3 | 96.8 |
| oct-10 | 146.8 | | | | 67.8 | | | | 87.5 | 93.0 | 108.5 | 91.4 |
| nov-10 | 174.5 | | | | 88.0 | | | | 109.9 | 77.1 | 47.9 | 98.5 |
| dic-10 | 205.1 | | | | 94.8 | | | | 122.5 | 151.8 | 134.5 | 125.6 |
| ene-11 | 121.0 | | | | 56.5 | | | | 72.8 | 86.4 | 75.8 | 73.7 |
| feb-11 | 130.0 | | | | 50.3 | | | | 70.2 | 137.4 | 78.0 | 73.9 |
| mar-11 | 113.6 | | | | 61.3 | | | | 75.1 | 73.1 | 119.8 | 82.5 |
| abr-11 | 107.3 | | | | 63.2 | | | | 75.1 | 48.8 | 88.1 | 76.3 |
| may-11 | 113.5 | | | | 86.2 | | | | 94.1 | 97.5 | 89.4 | 93.4 |
| jun-11 | 99.9 | | | | 51.6 | | | | 64.4 | 101.9 | 83.1 | 68.8 |
| jul-11 | 115.3 | | | | 61.0 | | | | 75.5 | 86.4 | 83.8 | 77.3 |
| ago-11 | 104.9 | | | | 66.9 | | | | 76.5 | 86.4 | 69.4 | 75.5 |
| sep-11 | 155.6 | | | | 96.8 | | | | 111.8 | 74.5 | 98.1 | 108.3 |
| oct-11 | 100.0 | 100.0 | 100.0 | 100.0 | 100.0 | 100.0 | 100.0 | 100.0 | 100.0 | 100.0 | 100.0 | 100.0 |
| nov-11 | 96.7 | 89.7 | 122.2 | 103.9 | 93.1 | 80.6 | 198.4 | 100.8 | 93.9 | 85.3 | 151.9 | 101.7 |
| dic-11 | 97.5 | 60.6 | 237.4 | 136.2 | 75.4 | 88.9 | 38.1 | 72.8 | 80.2 | 73.7 | 159.9 | 91.2 |
| ene-12 | 58.8 | 65.5 | 102.0 | 72.5 | 46.8 | 127.8 | 266.7 | 66.6 | 49.4 | 94.4 | 166.0 | 68.3 |
| feb-12 | 71.9 | 87.3 | 86.9 | 78.9 | 56.2 | 127.8 | 223.8 | 71.6 | 59.7 | 106.0 | 140.1 | 73.7 |
| mar-12 | 101.9 | 82.7 | 121.2 | 107.7 | 61.9 | 61.1 | 312.7 | 81.3 | 71.4 | 73.2 | 195.7 | 89.3 |
| abr-12 | 65.4 | 68.9 | 84.8 | 72.4 | 89.1 | 94.4 | 193.7 | 97.4 | 82.4 | 80.8 | 127.2 | 89.5 |
| may-12 | 90.7 | 66.6 | 130.3 | 101.3 | 87.0 | 105.6 | 165.1 | 93.7 | 87.5 | 84.6 | 143.8 | 96.1 |
| jun-12 | 97.4 | 48.3 | 66.7 | 87.8 | 61.1 | 113.9 | 84.1 | 64.7 | 70.4 | 78.3 | 73.5 | 72.1 |
| jul-12 | 87.9 | 59.7 | 88.9 | 88.1 | 110.2 | 175.0 | 123.8 | 113.5 | 103.7 | 112.3 | 102.5 | 105.4 |
| ago-12 | 104.7 | 96.5 | 91.9 | 103.5 | 79.2 | 177.8 | 120.6 | 85.8 | 85.5 | 133.8 | 103.1 | 91.4 |
| sep-12 | 78.2 | 96.5 | 83.8 | 83.3 | 89.8 | 250.0 | 115.9 | 97.2 | 86.2 | 166.6 | 96.3 | 92.7 |
| oct-12 | 103.0 | 128.7 | 82.8 | 102.7 | 91.7 | 213.9 | 74.6 | 94.5 | 94.2 | 167.9 | 79.6 | 97.2 |
| nov-12 | 86.8 | 52.9 | 139.4 | 99.8 | 104.7 | 186.1 | 49.2 | 103.3 | 99.5 | 113.6 | 104.3 | 102.2 |
| dic-12 | 71.6 | 85.6 | 79.8 | 76.4 | 90.6 | 155.6 | 93.7 | 93.1 | 85.1 | 116.2 | 85.2 | 87.8 |

Índices de Ventas de Inmuebles en Córdoba

Series originales (con estacionalidad) - Octubre de 2011 = 100

| Mes | Series originales (con estacionalidad) | | | | | | | | | | | |
|--------|--|----------|-------|----------------------|-----------------------|----------|-------|-------------------|----------------------------|----------|-------|--------------|
| | No Financiado | | | | Financiado | | | | No Financiado + Financiado | | | |
| | Departamentos y casas | Cocheras | Lotes | Indice No Financiado | Departamentos y casas | Cocheras | Lotes | Indice Financiado | Departamentos y casas | Cocheras | Lotes | Indice Total |
| ene-13 | 62.4 | 42.8 | 62.6 | 62.3 | 87.0 | 238.9 | 100.0 | 93.1 | 80.1 | 133.0 | 77.2 | 83.4 |
| feb-13 | 69.3 | 37.8 | 72.7 | 69.2 | 70.2 | 175.0 | 84.1 | 74.8 | 69.6 | 100.7 | 77.2 | 73.1 |
| mar-13 | 78.9 | 60.4 | 84.8 | 80.6 | 53.5 | 161.1 | 281.0 | 74.5 | 60.2 | 105.8 | 161.1 | 76.5 |
| abr-13 | 64.7 | 42.8 | 63.6 | 64.2 | 53.6 | 161.1 | 106.3 | 61.2 | 56.4 | 96.8 | 80.2 | 62.2 |
| may-13 | 92.2 | 103.2 | 147.5 | 108.8 | 64.5 | 100.0 | 254.0 | 80.2 | 71.7 | 99.4 | 188.9 | 89.5 |
| jun-13 | 75.4 | 76.7 | 84.8 | 79.5 | 41.6 | 100.0 | 285.7 | 62.2 | 50.6 | 86.1 | 163.0 | 67.9 |
| jul-13 | 67.4 | 90.0 | 108.1 | 80.1 | 56.7 | 283.3 | 398.4 | 90.2 | 58.8 | 180.2 | 221.0 | 86.6 |
| ago-13 | 63.7 | 277.8 | 145.5 | 98.9 | 47.1 | 80.6 | 487.3 | 81.8 | 51.0 | 177.6 | 278.4 | 87.3 |
| sep-13 | 55.4 | 113.8 | 154.5 | 84.0 | 63.1 | 66.7 | 346.0 | 84.9 | 59.8 | 88.8 | 229.0 | 84.4 |
| oct-13 | 72.4 | 90.0 | 234.3 | 113.4 | 55.1 | 336.1 | 200.0 | 75.4 | 59.1 | 205.4 | 221.0 | 88.0 |
| nov-13 | 72.6 | 134.9 | 103.0 | 85.7 | 61.8 | 108.3 | 265.1 | 78.9 | 63.8 | 119.3 | 166.0 | 81.0 |
| dic-13 | 90.5 | 90.0 | 115.2 | 98.4 | 33.1 | 66.7 | 77.8 | 37.7 | 48.9 | 76.9 | 100.6 | 58.0 |
| ene-14 | 53.4 | 45.0 | 111.1 | 67.6 | 39.8 | 72.2 | 214.3 | 54.2 | 43.0 | 57.0 | 151.2 | 58.6 |
| feb-14 | 54.7 | 153.5 | 84.8 | 69.7 | 36.7 | 55.6 | 111.1 | 43.1 | 41.2 | 103.4 | 95.1 | 52.0 |
| mar-14 | 43.3 | 48.5 | 62.6 | 49.2 | 29.4 | 27.8 | 250.8 | 46.3 | 32.9 | 37.6 | 135.8 | 47.3 |
| abr-14 | 39.3 | 80.8 | 66.7 | 49.5 | 23.5 | 19.4 | 252.4 | 40.9 | 27.6 | 49.7 | 138.9 | 43.7 |
| may-14 | 56.5 | 91.5 | 102.1 | 70.9 | 33.7 | 38.9 | 303.2 | 54.5 | 39.6 | 64.4 | 180.0 | 60.0 |
| jun-14 | 42.2 | 91.5 | 169.8 | 74.8 | 25.2 | 41.7 | 381.0 | 52.9 | 29.6 | 65.8 | 251.0 | 60.3 |
| jul-14 | 41.6 | 48.5 | 111.5 | 58.9 | 32.5 | 55.6 | 376.2 | 59.5 | 34.3 | 51.0 | 214.3 | 59.1 |
| ago-14 | 39.3 | 29.6 | 122.9 | 58.5 | 27.5 | 47.2 | 211.1 | 42.2 | 30.3 | 37.6 | 156.3 | 47.7 |
| sep-14 | 64.1 | 83.5 | 458.6 | 153.9 | 21.3 | 16.7 | 325.4 | 44.3 | 33.6 | 49.7 | 402.6 | 82.3 |
| oct-14 | 62.1 | 45.8 | 115.7 | 75.2 | 23.2 | 36.1 | 227.0 | 39.2 | 34.4 | 40.3 | 158.2 | 51.6 |
| nov-14 | 43.4 | 40.4 | 104.3 | 58.2 | 5.4 | 33.3 | 71.4 | 11.3 | 16.7 | 36.2 | 90.6 | 27.6 |
| dic-14 | 50.1 | 35.0 | 104.3 | 62.8 | 11.6 | 30.6 | 130.2 | 21.3 | 23.1 | 32.2 | 113.7 | 35.8 |
| ene-15 | 71.0 | 26.2 | 55.3 | 66.5 | 11.4 | 38.9 | 52.4 | 15.5 | 29.2 | 32.2 | 53.7 | 33.2 |
| feb-15 | 54.3 | 87.5 | 72.0 | 61.8 | 27.2 | 16.7 | 71.4 | 30.3 | 35.4 | 50.4 | 71.2 | 41.5 |
| mar-15 | 56.1 | 183.2 | 74.1 | 69.7 | 39.3 | 25.0 | 31.7 | 38.3 | 44.4 | 100.9 | 56.8 | 49.6 |
| abr-15 | 35.2 | 52.0 | 189.9 | 72.1 | 20.0 | 30.6 | 42.9 | 22.1 | 24.6 | 39.8 | 130.5 | 39.6 |
| may-15 | 44.8 | 60.2 | 257.7 | 95.0 | 26.7 | 25.0 | 58.7 | 29.1 | 32.2 | 41.1 | 177.4 | 52.1 |
| jun-15 | 81.2 | 155.9 | 302.5 | 138.0 | 27.3 | 11.1 | 61.9 | 29.5 | 43.4 | 81.0 | 205.5 | 67.1 |
| jul-15 | 43.3 | 49.2 | 181.5 | 76.0 | 30.7 | 27.8 | 76.2 | 34.2 | 34.6 | 37.2 | 138.7 | 49.0 |
| ago-15 | 42.8 | 139.4 | 168.0 | 78.4 | 41.9 | 30.6 | 100.0 | 46.1 | 42.4 | 82.3 | 139.9 | 57.8 |
| sep-15 | 63.7 | 106.6 | 239.9 | 107.4 | 30.6 | 13.9 | 57.1 | 31.5 | 42.8 | 58.4 | 166.2 | 60.9 |
| oct-15 | 62.4 | 62.9 | 212.8 | 97.1 | 31.0 | 11.1 | 44.4 | 30.4 | 42.6 | 35.8 | 144.9 | 56.1 |
| nov-15 | 42.2 | 46.5 | 234.7 | 86.6 | 28.8 | 13.9 | 30.2 | 27.5 | 34.7 | 29.2 | 152.4 | 50.4 |
| dic-15 | 39.3 | 355.4 | 134.6 | 81.9 | 30.7 | 191.7 | 22.2 | 34.3 | 35.2 | 264.1 | 89.3 | 53.6 |

Índices de Ventas de Inmuebles en Córdoba

Series originales (con estacionalidad) - Octubre de 2011 = 100

| Mes | Series originales (con estacionalidad) | | | | | | | | | | | |
|-------------------|--|----------|-------|----------------------|-----------------------|----------|-------|-------------------|----------------------------|----------|-------|--------------|
| | No Financiado | | | | Financiado | | | | No Financiado + Financiado | | | |
| | Departamentos y casas | Cocheras | Lotes | Indice No Financiado | Departamentos y casas | Cocheras | Lotes | Indice Financiado | Departamentos y casas | Cocheras | Lotes | Indice Total |
| Ene-16 | 19.7 | 24.6 | 89.7 | 36.0 | 31.0 | 11.1 | 25.4 | 29.0 | 29.5 | 17.3 | 63.7 | 33.5 |
| Feb-16 | 38.3 | 53.7 | 125.2 | 59.6 | 26.6 | 8.3 | 31.7 | 25.5 | 32.3 | 31.1 | 87.4 | 39.7 |
| Mar-16 | 51.3 | 53.7 | 183.6 | 82.0 | 23.5 | 13.9 | 46.0 | 24.1 | 34.3 | 33.4 | 128.0 | 46.9 |
| Abr-16 | 26.9 | 44.7 | 135.6 | 53.0 | 29.3 | 11.1 | 44.4 | 28.9 | 30.7 | 27.6 | 98.7 | 39.7 |
| May-16 | 32.8 | 29.1 | 135.6 | 56.0 | 29.0 | 19.4 | 36.5 | 28.3 | 32.3 | 23.0 | 95.6 | 40.3 |
| Jun-16 | 38.5 | 44.7 | 109.5 | 55.6 | 25.1 | 11.1 | 20.6 | 23.1 | 32.3 | 27.6 | 73.7 | 37.2 |
| Jul-16 | 43.1 | 55.9 | 120.0 | 62.1 | 13.4 | 5.6 | 92.1 | 21.0 | 26.8 | 31.1 | 108.1 | 38.8 |
| Ago-16 | 57.2 | 55.9 | 136.7 | 76.3 | 7.1 | 22.2 | 68.3 | 13.0 | 25.0 | 37.7 | 108.7 | 37.7 |
| % a/a Agosto 2016 | 33.7 | -59.9 | -18.6 | -2.7 | -83.0 | -27.3 | -31.7 | -71.8 | -40.9 | -54.2 | -22.3 | -34.8 |

Fuente: Economic Trends S.A. para la Cámara Empresarial de Desarrollistas Urbanos de Córdoba (CEDUC).

Índices de Ventas de Inmuebles en Córdoba

Series desestacionalizadas - Octubre de 2011 = 100

| Mes | Series desestacionalizadas | | | | | | | | | | | |
|--------|----------------------------|----------|-------|----------------------|-----------------------|----------|-------|-------------------|----------------------------|----------|-------|--------------|
| | No Financiado | | | | Financiado | | | | No Financiado + Financiado | | | |
| | Departamentos y casas | Cocheras | Lotes | Indice No Financiado | Departamentos y casas | Cocheras | Lotes | Indice Financiado | Departamentos y casas | Cocheras | Lotes | Indice Total |
| may-10 | 157.2 | | | | 52.3 | | | | 79.1 | | 71.7 | 72.7 |
| jun-10 | 148.9 | | | | 95.9 | | | | 111.1 | 83.9 | 115.0 | 114.0 |
| jul-10 | 132.0 | | | | 80.9 | | | | 95.9 | 87.1 | 83.1 | 91.2 |
| ago-10 | 149.8 | | | | 85.9 | | | | 103.8 | 118.6 | 75.6 | 96.7 |
| sep-10 | 147.1 | | | | 70.5 | | | | 91.3 | 82.8 | 81.9 | 84.6 |
| oct-10 | 131.2 | | | | 59.8 | | | | 77.5 | 72.8 | 108.5 | 81.1 |
| nov-10 | 153.1 | | | | 68.8 | | | | 88.7 | 81.4 | 44.8 | 84.9 |
| dic-10 | 175.2 | | | | 94.5 | | | | 116.6 | 172.5 | 147.5 | 126.3 |
| ene-11 | 148.9 | | | | 64.7 | | | | 78.3 | 90.9 | 86.5 | 84.8 |
| feb-11 | 141.5 | | | | 60.2 | | | | 81.6 | 121.7 | 101.5 | 87.5 |
| mar-11 | 121.3 | | | | 73.8 | | | | 86.4 | 93.3 | 97.4 | 88.6 |
| abr-11 | 131.4 | | | | 75.0 | | | | 86.4 | 64.2 | 105.5 | 88.3 |
| may-11 | 104.7 | | | | 77.0 | | | | 87.7 | 103.3 | 83.1 | 85.5 |
| jun-11 | 100.2 | | | | 64.9 | | | | 75.8 | 136.5 | 77.3 | 81.0 |
| jul-11 | 119.0 | | | | 54.6 | | | | 72.0 | 77.5 | 76.7 | 71.4 |
| ago-11 | 99.2 | | | | 67.5 | | | | 77.0 | 66.6 | 67.6 | 72.2 |
| sep-11 | 160.4 | | | | 81.7 | | | | 102.6 | 64.1 | 92.9 | 94.6 |
| oct-11 | 88.4 | 86.9 | 98.2 | 84.9 | 87.5 | 78.2 | 128.4 | 89.3 | 88.3 | 77.7 | 98.5 | 88.3 |
| nov-11 | 84.8 | 91.1 | 123.1 | 101.8 | 73.1 | 74.0 | 319.8 | 88.4 | 76.2 | 88.8 | 145.7 | 87.8 |
| dic-11 | 84.4 | 69.0 | 207.0 | 131.7 | 77.9 | 96.0 | 67.2 | 83.8 | 77.2 | 84.3 | 175.5 | 93.1 |
| ene-12 | 71.7 | 114.6 | 129.1 | 89.0 | 53.3 | 103.6 | 374.3 | 73.2 | 53.2 | 102.0 | 190.5 | 78.9 |
| feb-12 | 77.4 | 87.2 | 116.3 | 93.8 | 65.1 | 123.3 | 363.5 | 85.5 | 67.9 | 93.4 | 184.8 | 86.5 |
| mar-12 | 108.1 | 88.8 | 157.7 | 112.6 | 74.5 | 87.5 | 265.5 | 89.1 | 82.2 | 92.3 | 163.2 | 95.6 |
| abr-12 | 80.9 | 86.8 | 115.0 | 93.4 | 107.3 | 109.6 | 243.2 | 125.3 | 96.6 | 105.9 | 150.1 | 104.5 |
| may-12 | 83.4 | 62.7 | 100.1 | 89.7 | 78.1 | 132.4 | 142.1 | 88.9 | 80.6 | 90.2 | 131.2 | 87.9 |
| jun-12 | 98.2 | 49.0 | 77.2 | 87.7 | 75.9 | 130.4 | 72.7 | 73.3 | 82.4 | 99.4 | 66.8 | 83.8 |
| jul-12 | 91.0 | 66.8 | 86.0 | 94.0 | 97.5 | 118.0 | 80.5 | 87.9 | 98.7 | 101.3 | 93.7 | 96.7 |
| ago-12 | 102.0 | 71.7 | 75.4 | 92.9 | 78.4 | 161.6 | 83.1 | 82.0 | 86.6 | 108.6 | 101.6 | 88.2 |
| sep-12 | 79.2 | 68.7 | 60.6 | 69.5 | 77.1 | 401.5 | 81.3 | 83.9 | 78.6 | 140.1 | 89.1 | 80.6 |
| oct-12 | 89.2 | 111.8 | 81.3 | 87.2 | 79.2 | 167.4 | 95.8 | 84.4 | 82.6 | 130.3 | 76.9 | 85.2 |
| nov-12 | 76.0 | 53.7 | 140.4 | 97.8 | 83.3 | 170.8 | 79.3 | 90.6 | 81.7 | 115.8 | 104.9 | 88.5 |
| dic-12 | 63.7 | 97.5 | 69.6 | 73.9 | 99.1 | 168.0 | 165.3 | 107.2 | 83.6 | 133.5 | 91.9 | 91.8 |

Índices de Ventas de Inmuebles en Córdoba

Series desestacionalizadas - Octubre de 2011 = 100

| Mes | Series desestacionalizadas | | | | | | | | | | | |
|--------|----------------------------|----------|-------|----------------------|-----------------------|----------|-------|-------------------|----------------------------|----------|-------|--------------|
| | No Financiado | | | | Financiado | | | | No Financiado + Financiado | | | |
| | Departamentos y casas | Cocheras | Lotes | Indice No Financiado | Departamentos y casas | Cocheras | Lotes | Indice Financiado | Departamentos y casas | Cocheras | Lotes | Indice Total |
| ene-13 | 75.2 | 74.9 | 79.2 | 76.5 | 98.3 | 193.7 | 140.3 | 102.3 | 86.2 | 148.8 | 90.1 | 97.3 |
| feb-13 | 73.6 | 37.8 | 97.3 | 82.2 | 76.7 | 168.8 | 136.6 | 89.3 | 76.1 | 88.3 | 103.3 | 84.5 |
| mar-13 | 82.4 | 64.8 | 110.3 | 84.2 | 63.9 | 230.8 | 238.6 | 81.6 | 69.1 | 129.7 | 138.6 | 80.7 |
| abr-13 | 81.7 | 53.9 | 86.3 | 82.8 | 65.6 | 187.0 | 133.5 | 78.7 | 67.8 | 126.3 | 91.4 | 73.3 |
| may-13 | 84.7 | 97.2 | 113.4 | 96.3 | 58.7 | 125.4 | 218.7 | 76.1 | 65.8 | 108.0 | 168.5 | 82.1 |
| jun-13 | 76.1 | 77.9 | 98.2 | 79.4 | 52.4 | 114.5 | 247.1 | 70.4 | 59.9 | 106.3 | 153.8 | 79.1 |
| jul-13 | 69.3 | 100.7 | 104.6 | 85.5 | 49.2 | 191.1 | 259.1 | 69.9 | 55.3 | 161.6 | 201.2 | 78.7 |
| ago-13 | 63.1 | 206.5 | 119.5 | 88.8 | 47.0 | 73.2 | 335.8 | 78.2 | 52.4 | 154.8 | 266.1 | 85.2 |
| sep-13 | 56.2 | 81.1 | 111.8 | 70.0 | 54.4 | 107.1 | 242.8 | 73.3 | 54.4 | 72.5 | 207.2 | 73.4 |
| oct-13 | 60.8 | 78.2 | 230.1 | 96.3 | 46.6 | 263.0 | 256.8 | 67.3 | 50.9 | 154.4 | 216.3 | 76.2 |
| nov-13 | 63.5 | 136.9 | 103.7 | 84.0 | 49.7 | 99.4 | 427.3 | 69.2 | 52.9 | 119.5 | 168.9 | 70.1 |
| dic-13 | 83.8 | 102.5 | 100.5 | 95.2 | 37.5 | 72.0 | 137.2 | 43.4 | 48.7 | 89.2 | 109.1 | 61.7 |
| ene-14 | 63.7 | 78.7 | 140.6 | 83.0 | 44.0 | 58.5 | 300.8 | 59.6 | 45.7 | 64.4 | 174.2 | 67.7 |
| feb-14 | 57.7 | 153.4 | 113.5 | 82.8 | 38.5 | 53.6 | 180.4 | 51.4 | 43.9 | 94.3 | 129.0 | 59.5 |
| mar-14 | 44.5 | 52.1 | 81.4 | 51.4 | 35.5 | 39.8 | 213.0 | 50.7 | 38.1 | 45.1 | 118.4 | 50.0 |
| abr-14 | 50.6 | 101.8 | 90.5 | 63.9 | 29.5 | 22.5 | 316.9 | 52.6 | 34.0 | 63.0 | 160.8 | 52.4 |
| may-14 | 52.0 | 86.2 | 78.5 | 62.8 | 31.0 | 48.8 | 261.0 | 51.7 | 36.1 | 72.2 | 156.6 | 55.1 |
| jun-14 | 42.5 | 92.9 | 196.5 | 74.7 | 31.9 | 47.7 | 329.5 | 59.9 | 35.2 | 79.8 | 241.9 | 70.3 |
| jul-14 | 42.8 | 54.3 | 107.9 | 62.8 | 27.7 | 37.5 | 244.6 | 46.1 | 32.0 | 45.5 | 195.0 | 53.2 |
| ago-14 | 39.2 | 22.0 | 100.9 | 52.5 | 27.4 | 42.9 | 145.5 | 40.4 | 31.4 | 34.0 | 146.2 | 46.6 |
| sep-14 | 65.1 | 59.5 | 331.8 | 128.3 | 18.4 | 26.8 | 228.4 | 38.2 | 30.6 | 39.8 | 359.1 | 71.8 |
| oct-14 | 51.2 | 39.8 | 113.6 | 63.9 | 19.5 | 28.2 | 291.5 | 35.0 | 29.4 | 29.8 | 155.2 | 44.4 |
| nov-14 | 38.0 | 41.0 | 105.0 | 57.0 | 4.4 | 30.6 | 115.1 | 9.9 | 13.9 | 36.0 | 93.0 | 23.9 |
| dic-14 | 47.6 | 39.9 | 91.0 | 60.7 | 13.5 | 33.0 | 229.7 | 24.5 | 23.2 | 37.5 | 123.8 | 38.5 |
| ene-15 | 83.9 | 45.8 | 70.0 | 81.7 | 12.4 | 31.5 | 73.5 | 17.0 | 30.8 | 36.7 | 61.6 | 38.0 |
| feb-15 | 57.0 | 87.4 | 96.4 | 73.5 | 27.8 | 16.1 | 116.0 | 36.2 | 37.1 | 47.0 | 97.5 | 47.2 |
| mar-15 | 57.3 | 196.6 | 96.4 | 72.9 | 47.9 | 35.8 | 26.9 | 42.0 | 51.7 | 119.7 | 49.8 | 52.4 |
| abr-15 | 45.8 | 65.5 | 257.5 | 93.0 | 25.4 | 35.5 | 53.9 | 28.4 | 30.8 | 49.8 | 152.0 | 48.2 |
| may-15 | 40.8 | 56.7 | 198.1 | 84.1 | 24.9 | 31.4 | 50.5 | 27.6 | 29.4 | 46.8 | 152.9 | 47.8 |
| jun-15 | 81.6 | 158.2 | 350.2 | 137.9 | 34.5 | 12.7 | 53.5 | 33.4 | 51.6 | 98.2 | 198.1 | 78.2 |
| jul-15 | 44.5 | 55.1 | 175.7 | 81.0 | 26.2 | 18.8 | 49.5 | 26.5 | 32.3 | 33.1 | 126.2 | 44.1 |
| ago-15 | 42.7 | 103.6 | 137.9 | 70.4 | 41.8 | 27.7 | 68.9 | 44.0 | 43.9 | 74.5 | 130.9 | 56.4 |
| sep-15 | 64.8 | 76.0 | 173.6 | 89.6 | 26.4 | 22.3 | 40.1 | 27.2 | 38.9 | 46.7 | 148.2 | 53.1 |
| oct-15 | 51.4 | 54.7 | 209.0 | 82.5 | 26.0 | 8.7 | 57.1 | 27.1 | 36.5 | 26.5 | 142.2 | 48.3 |
| nov-15 | 37.0 | 47.2 | 236.3 | 84.9 | 23.5 | 12.7 | 48.6 | 24.1 | 28.9 | 29.0 | 156.5 | 43.7 |
| dic-15 | 37.4 | 404.9 | 117.3 | 79.2 | 35.7 | 207.3 | 39.2 | 39.5 | 35.4 | 307.6 | 97.3 | 57.6 |

Índices de Ventas de Inmuebles en Córdoba

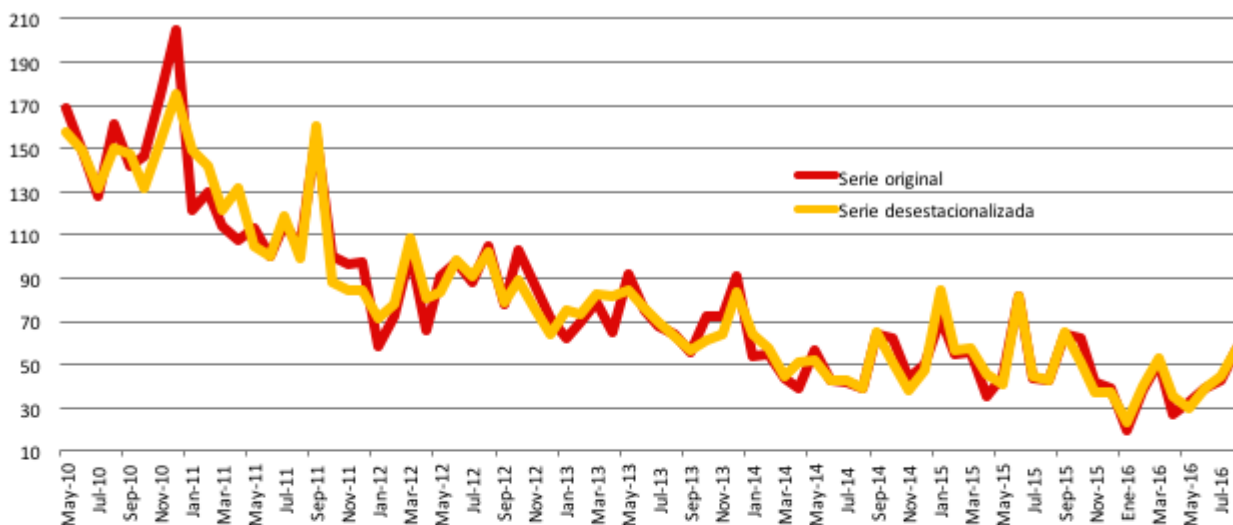
Series desestacionalizadas - Octubre de 2011 = 100

| Mes | Series desestacionalizadas | | | | | | | | | | | |
|--------------------------------------|----------------------------|----------|-------|----------------------|-----------------------|----------|-------|-------------------|----------------------------|----------|-------|--------------|
| | No Financiado | | | | Financiado | | | | No Financiado + Financiado | | | |
| | Departamentos y casas | Cocheras | Lotes | Indice No Financiado | Departamentos y casas | Cocheras | Lotes | Indice Financiado | Departamentos y casas | Cocheras | Lotes | Indice Total |
| Ene-16 | 23.3 | 43.0 | 113.6 | 44.2 | 33.6 | 9.0 | 35.7 | 31.9 | 31.2 | 19.7 | 73.1 | 38.4 |
| Feb-16 | 40.2 | 53.7 | 167.6 | 70.9 | 27.2 | 8.1 | 51.5 | 30.5 | 33.9 | 28.9 | 119.8 | 45.1 |
| Mar-16 | 52.4 | 57.6 | 239.0 | 85.6 | 28.7 | 19.9 | 39.0 | 26.4 | 39.9 | 39.6 | 112.3 | 49.5 |
| Abr-16 | 35.0 | 56.4 | 184.0 | 68.3 | 37.3 | 12.9 | 55.9 | 37.2 | 38.4 | 34.5 | 114.9 | 48.2 |
| May-16 | 29.9 | 27.4 | 104.2 | 49.6 | 27.1 | 24.4 | 31.4 | 26.9 | 29.5 | 26.2 | 82.4 | 37.0 |
| Jun-16 | 38.7 | 45.4 | 126.8 | 55.6 | 31.8 | 12.7 | 17.8 | 26.1 | 38.4 | 33.5 | 71.0 | 43.3 |
| Jul-16 | 44.3 | 62.7 | 116.1 | 66.3 | 11.4 | 3.8 | 59.9 | 16.3 | 25.0 | 27.7 | 98.3 | 34.9 |
| Ago-16 | 57.1 | 41.6 | 112.2 | 68.5 | 7.1 | 20.2 | 47.0 | 12.4 | 25.9 | 34.1 | 101.7 | 36.8 |
| % últimos 3 meses vs 3 meses previos | 19.5 | 5.8 | -32.6 | -6.5 | -46.0 | -35.9 | -1.2 | -39.3 | -17.1 | -5.0 | -12.4 | -14.7 |

Fuente: Economic Trends S.A. para la Cámara Empresarial de Desarrollistas Urbanos de Córdoba (CEDUC).

Ventas no financiadas de departamentos

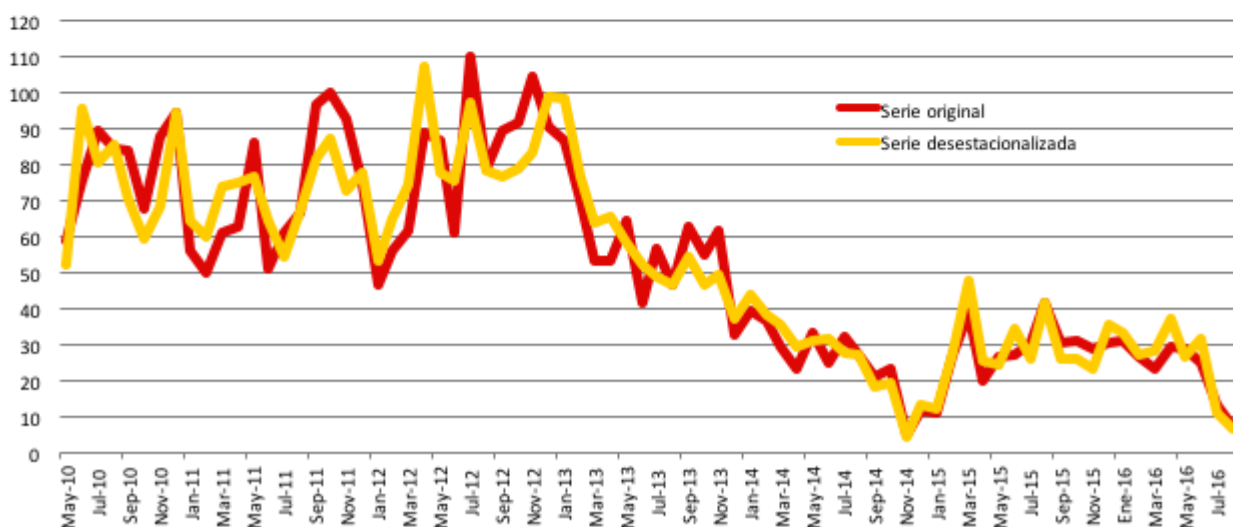
Octubre de 2011 = 100



Fuente: Economic Trends S.A. para la Cámara Empresarial de Desarrollistas Urbanos de Córdoba (CEDUC).

Ventas financiadas de departamentos

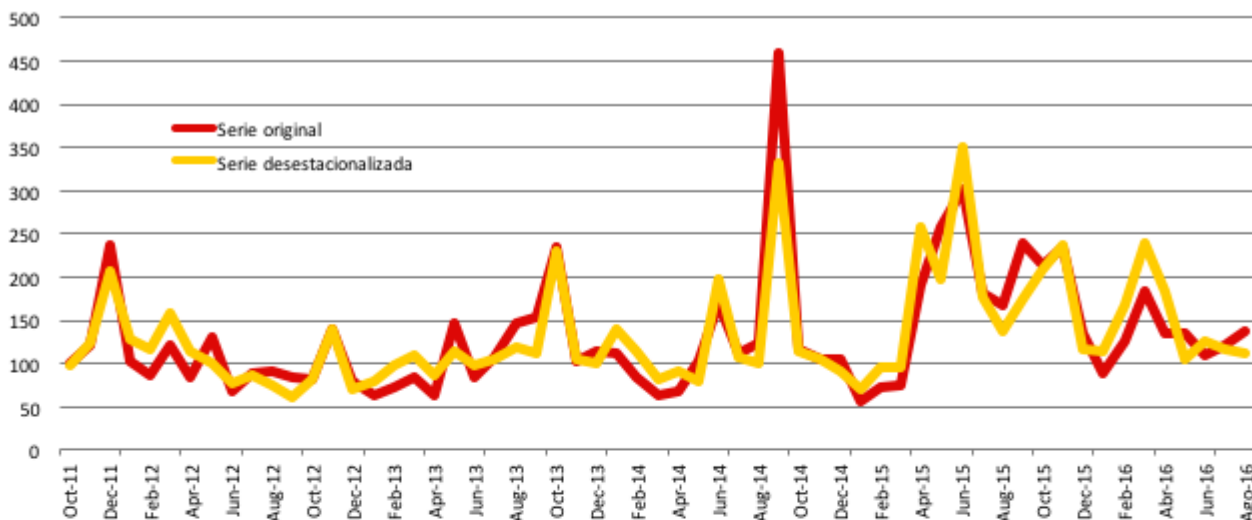
Octubre de 2011 = 100



Fuente: Economic Trends S.A. para la Cámara Empresarial de Desarrollistas Urbanos de Córdoba (CEDUC).

Ventas no financiadas de lotes

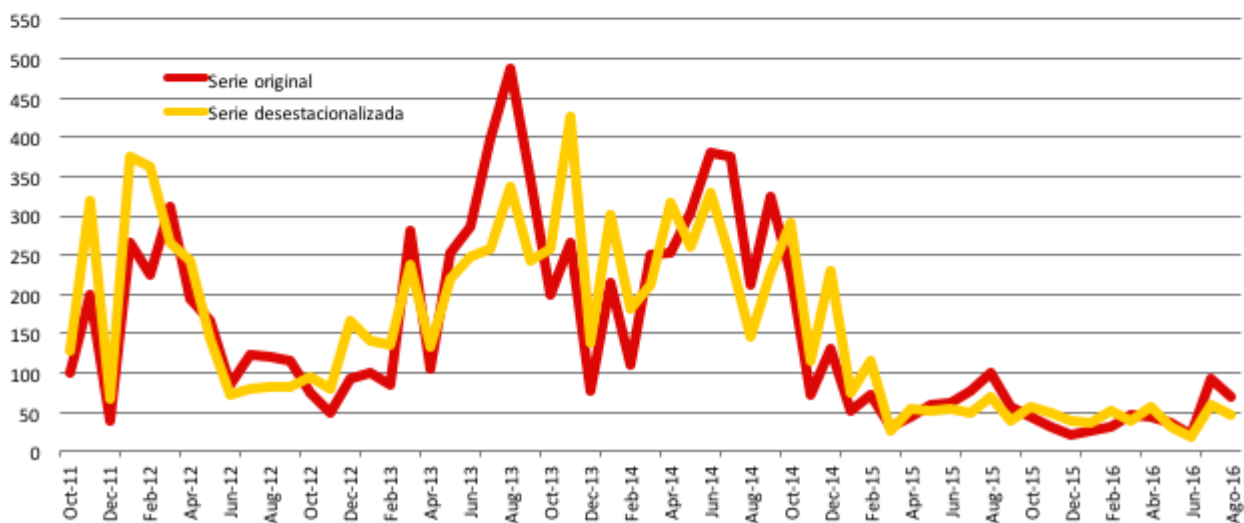
Octubre de 2011 = 100



Fuente: Economic Trends S.A. para la Cámara Empresarial de Desarrollistas Urbanos de Córdoba (CEDUC).

Ventas financiadas de lotes

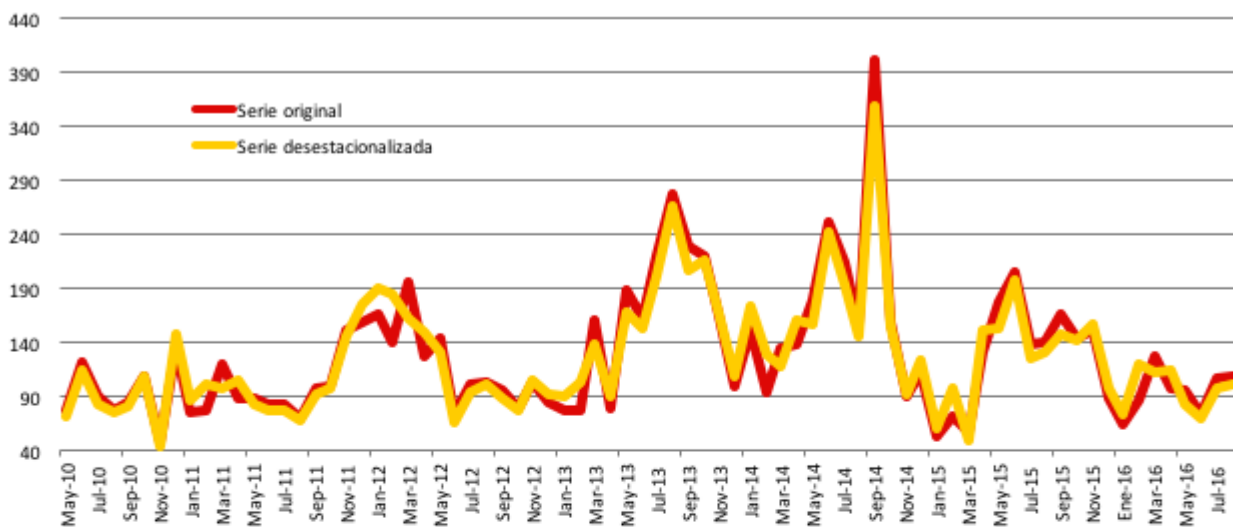
Octubre de 2011 = 100



Fuente: Economic Trends S.A. para la Cámara Empresarial de Desarrollistas Urbanos de Córdoba (CEDUC).

Ventas financiadas y no financiadas de lotes

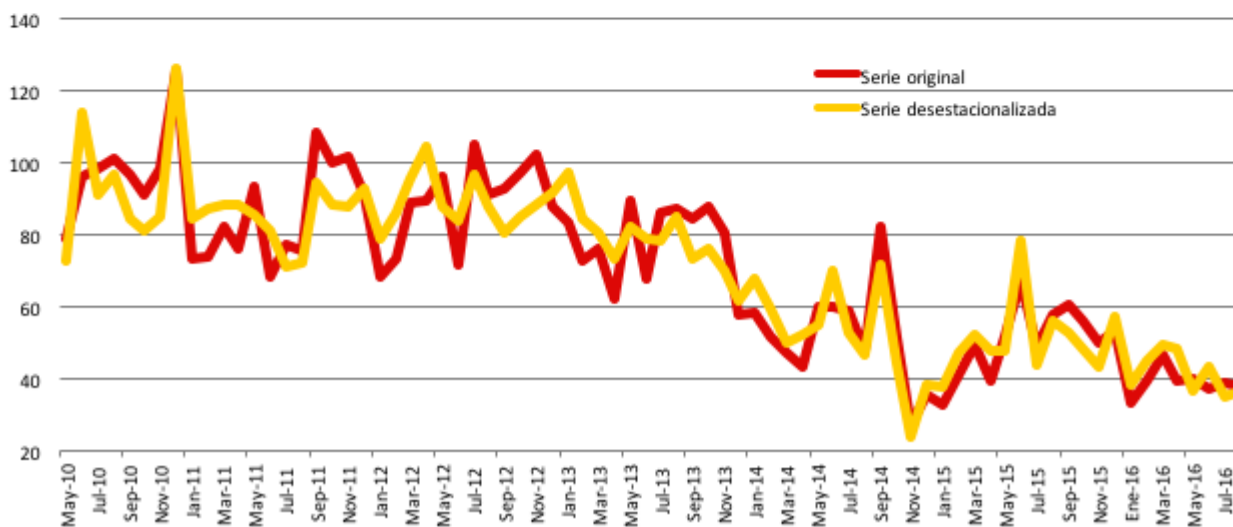
Octubre de 2011 = 100



Fuente: Economic Trends S.A. para la Cámara Empresarial de Desarrollistas Urbanos de Córdoba (CEDUC).

Índice Total - Ventas financiadas y no financiadas

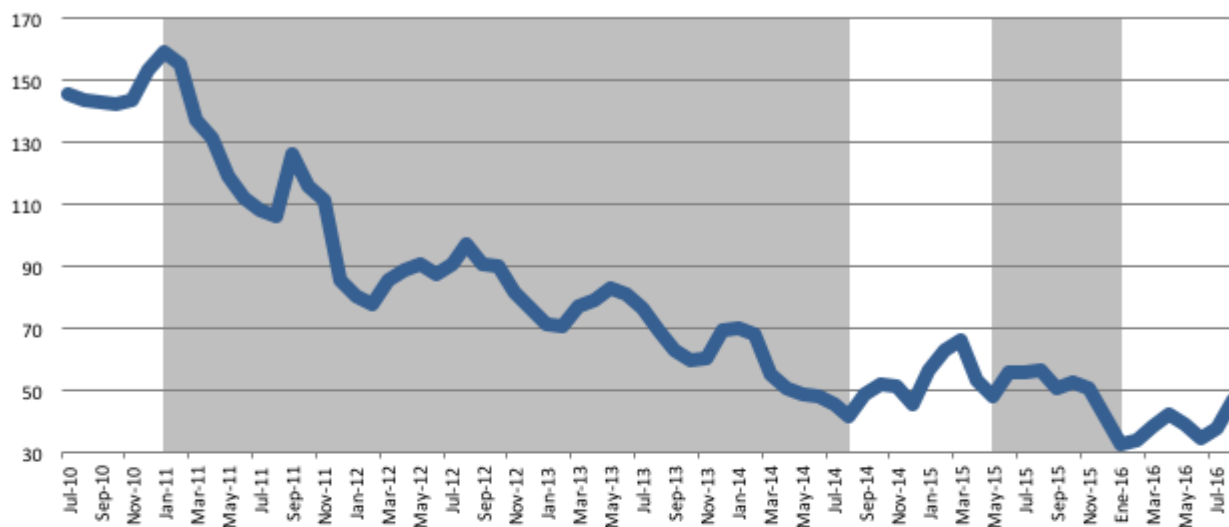
Octubre de 2011 = 100



Fuente: Economic Trends S.A. para la Cámara Empresarial de Desarrollistas Urbanos de Córdoba (CEDUC).

Ventas no financiadas de departamentos

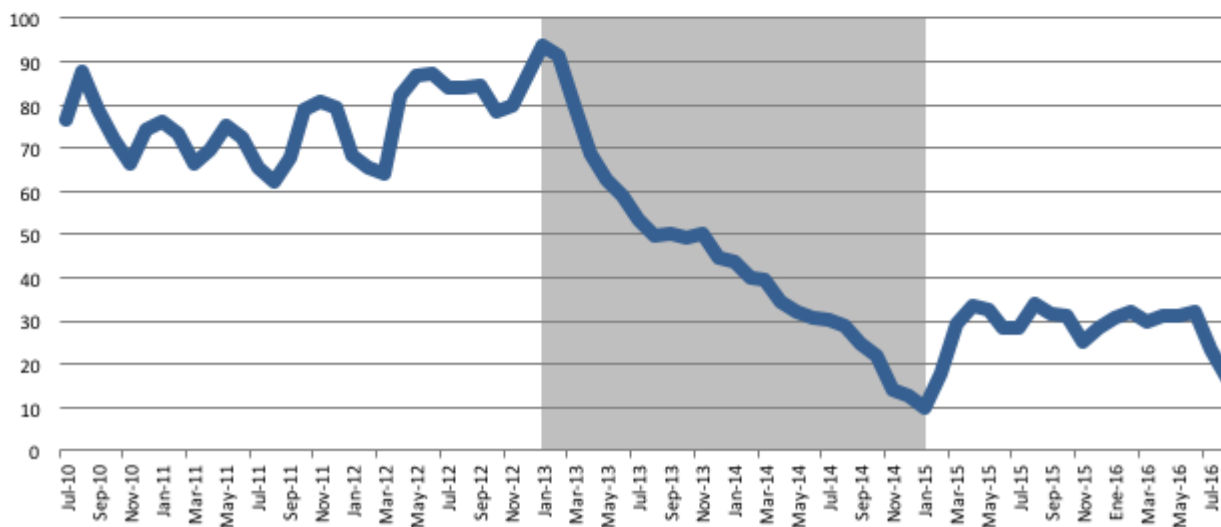
Promedio móvil 3 meses - Serie desestacionalizada - Octubre de 2011 = 100 (serie original)



Fuente: Economic Trends S.A. para la Cámara Empresarial de Desarrollistas Urbanos de Córdoba (CEDUC).

Ventas financiadas de departamentos

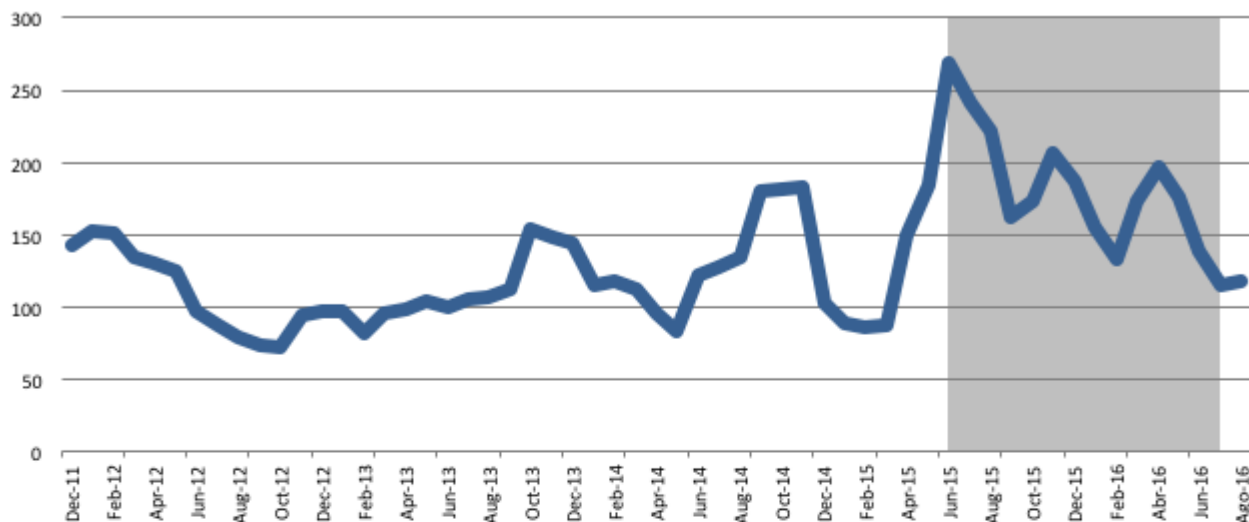
Promedio móvil 3 meses - Serie desestacionalizada - Octubre de 2011 = 100 (serie original)



Fuente: Economic Trends S.A. para la Cámara Empresarial de Desarrollistas Urbanos de Córdoba (CEDUC).

Ventas no financiadas de lotes

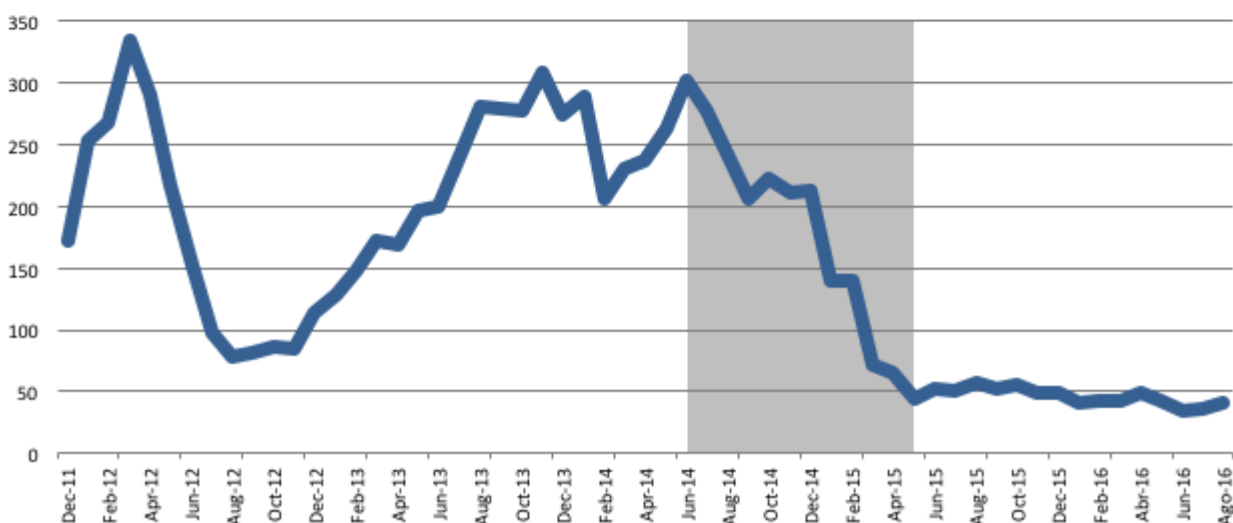
Promedio móvil 3 meses - Serie desestacionalizada - Octubre de 2011 = 100 (serie original)



Fuente: Economic Trends S.A. para la Cámara Empresarial de Desarrollistas Urbanos de Córdoba (CEDUC).

Ventas financiadas de lotes

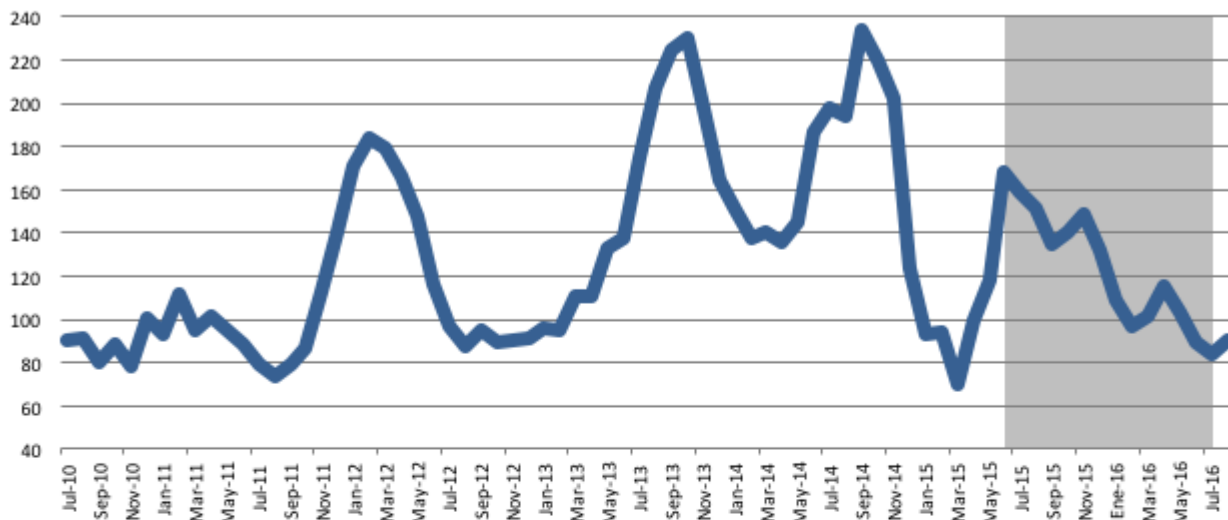
Promedio móvil 3 meses - Serie desestacionalizada - Octubre de 2011 = 100 (serie original)



Fuente: Economic Trends S.A. para la Cámara Empresarial de Desarrollistas Urbanos de Córdoba (CEDUC).

Ventas financiadas y no financiadas de lotes

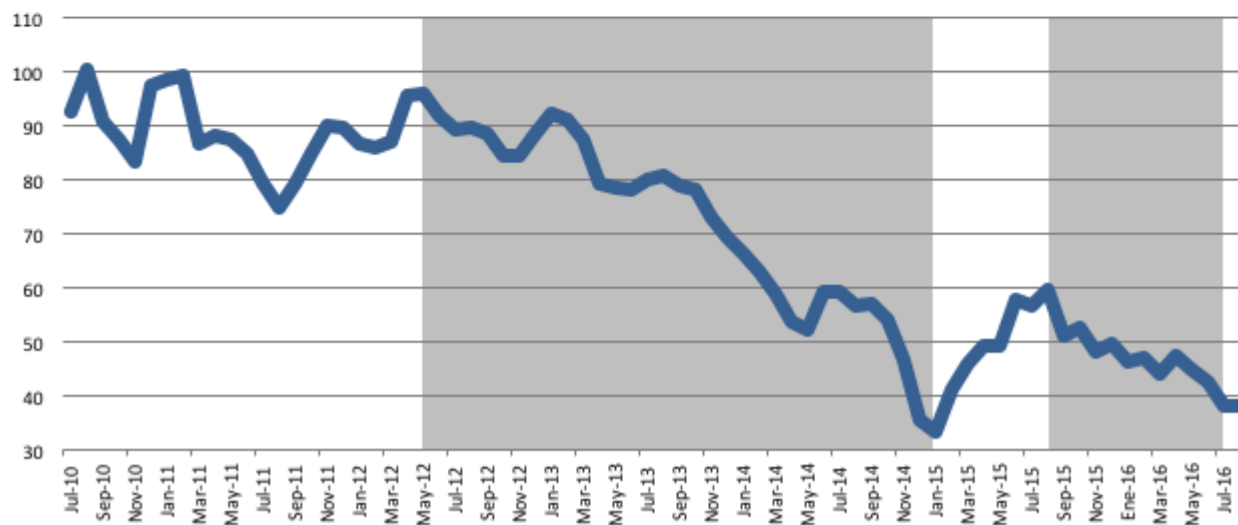
Promedio móvil 3 meses - Serie desestacionalizada - Octubre de 2011 = 100 (serie original)



Fuente: Economic Trends S.A. para la Cámara Empresarial de Desarrollistas Urbanos de Córdoba (CEDUC).

Índice Total - Ventas financiadas y no financiadas

Promedio móvil 3 meses - Serie desestacionalizada - Octubre de 2011 = 100 (serie original)



Fuente: Economic Trends S.A. para la Cámara Empresarial de Desarrollistas Urbanos de Córdoba (CEDUC).

Notas metodológicas

- 1.- Todos los índices reportados en este informe reflejan ventas efectivamente realizadas en cada mes calendario, independientemente de si las unidades vendidas fueron escrituradas o no, lo que permite medir en tiempo real la evolución de las ventas de los desarrollistas cordobeses, sin los rezagos propios de los índices basados en escrituras.
- 2.- La información utilizada para la elaboración de los distintos índices es reportada por las empresas socias de CEDUC mediante formularios electrónicos auto-administrados a través de un esquema de triangulación de correos electrónicos que permite garantizar la confidencialidad de los datos reportados ya que no es posible detectar a qué empresa corresponde cada dato individual.
- 3.- Los índices del Monitor de Ventas de Inmuebles en Cordoba están calculados en unidades homogéneas, lo que permite consolidar diferentes tipologías de inmuebles. En el caso de departamentos (de uno, dos y tres dormitorios), casas y cocheras, la unidad homogénea es la cantidad de metros cuadrados promedio por tipología. Y en el caso de lotes, tanto en barrios abiertos como en barrios cerrados, la unidad homogénea es el valor promedio de los lotes expresado en su equivalente en metros cuadrados de construcción.
- 4.- El cálculo de los índices ajusta por la eventual diferencia en la cantidad de respondentes entre mediciones, por ejemplo por incorporación de nuevas empresas o falta de respuesta de alguna de ellas, para evitar variaciones que no se deban a los movimientos de mercado que se desea captar.
- 5.- Las series desestacionalizadas se obtuvieron aplicando la técnica econométrica X-12 ARIMA.